

If not treated, sudden cardiac arrest will cause death. It is important to remember to immediately call for help and activate your emergency response system.

Basic Steps for Using the LIFEPAK CR2 Defibrillator

-

-

- 

- ### GENERAL Maintenance Operating Instructions



- 5 If the defibrillator is a dual-language model, a voice prompt occurs at this time in the secondary language. This voice prompt instructs you to press the **LANGUAGE** button to switch to the secondary language (if desired).



- 6 If the patient is a child less than 8 years old or who weighs less than 25 kg (55 lb), press the **CHILD MODE** button to enter Child mode. To switch back to Adult mode, press the **CHILD MODE** button again.
Note: In Japan, Child mode is recommended for children less than 6 years old.



- 7 Pull the red handle to reveal the electrode pads.



- 8 Pull the loops on the electrode pads to peel the pads from the tray.



- 9 Apply the pads to the patient's bare chest exactly as shown in the pictures on the pads. If possible, avoid placing the pads over broken skin. Be sure to press firmly so that the pads completely adhere to the patient's chest.
Note: Be sure you do not place the electrode pads over an implanted device such as implanted pacemaker or ICD. An indication of an implant is a protrusion in the chest skin and a scar. If you are in doubt, apply the pads as shown in the pictures.
Note: Ensure the pads are at least 2.5 cm (1 in) apart. If the patient's chest is too small, place the pads on the chest and back as shown in the child pictures on the pads.



- 10 Listen to the voice prompts and do not touch the patient unless instructed to do so.



- 11 If the defibrillator heart rhythm analysis determines that a shock is needed you will hear **EVERYONE CLEAR**, followed by one of these two options.
- If you have a semi-automatic model, you will hear **PRESS FLASHING BUTTON**. Press the flashing **SHOCK** button to deliver a shock.
 - If you have a fully automatic model, you will hear **DO NOT TOUCH PATIENT** followed by **DELIVERING SHOCK**. The defibrillator will automatically deliver a shock without requiring further action.

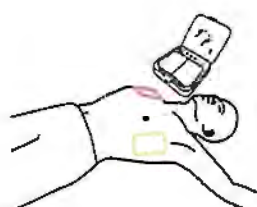
- 12 Do not touch the patient while a shock is being delivered.

Regardless of which model you have, continue to follow the voice prompts.



- 13 The defibrillator will instruct you to begin chest compressions. The defibrillator will provide instructions for hand placement during chest compressions, and 'tocks' at the correct compression rate. You may also be instructed to provide rescue breaths, depending on the settings for the defibrillator.

Note: Do not remove the electrode pads from the patient's chest during chest compressions.



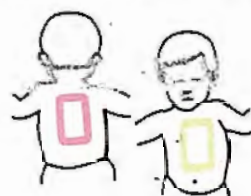
- 14 Continue to follow the voice prompts and provide chest compressions when instructed until one of the following occurs:

- The patient begins breathing regularly or moving
- Emergency medical personnel arrive and tell you to stop.

Do not remove the pads or disconnect them from the defibrillator unless emergency medical personnel instruct you to do so.

Special Instructions for Use on Young Children

If the patient is a young child, place the electrode pads on the chest and back, as shown below. The pads must be placed so they are not touching each other. Illustrations showing this placement are also provided on the pads for quick reference during use.



What to Do After Emergency Medical Personnel Arrive

When emergency medical personnel arrive, continue performing CPR until they tell you to stop. Tell them what actions you have taken, how long the patient has been unconscious, if you delivered shocks, and the number of shocks delivered.

Do not worry if you cannot recall precisely what happened. Your defibrillator records heart rhythms, shocks, and other data that can be transferred to medical professionals during the event or at a later time. Contact your local Physio-Control representative or local authorized distributor for assistance with data transfer.

Emergency medical personnel may be able to disconnect the electrode pads from the defibrillator and reconnect them to another defibrillator that has a compatible cable. To disconnect the electrode pads, pull the electrode cable straight out from the defibrillator and close the lid to turn off the defibrillator.

What to Do After Using Your Defibrillator

After you use your defibrillator to respond to a cardiac arrest, complete the following tasks.

1. If the defibrillator is turned on, press and hold the **ON/OFF** button for approximately 3 seconds to turn it off.
2. Clean the defibrillator and its accessories according to the instructions provided in *Cleaning the Defibrillator* (on page 84). Use only the cleaning agents listed.
3. The QUIK-STEP electrode tray must be replaced after it is opened, even if the electrodes were not used. If you do not have a spare electrode tray, contact your Physio-Control representative or local authorized distributor to order a new electrode tray.
4. When the new electrode tray arrives, install it according to the instructions provided in *Replacing the Electrodes* (on page 81).
5. Close the lid and verify that the Readiness indicator flashes every 6 seconds.

Note: If the Readiness indicator does not flash, open the lid. When the voice prompts start, press and hold the **LANGUAGE** and **ON/OFF** buttons simultaneously for at least 2 seconds, until you hear **DEVICE READY** or **DEVICE NOT READY**. The defibrillator will provide voice prompts to help you determine what is wrong. See *Caring for the Defibrillator* (on page 77) for more information.

6. Dispose of the used electrode tray according to the instructions provided in *Recycling Information* (on page 85).