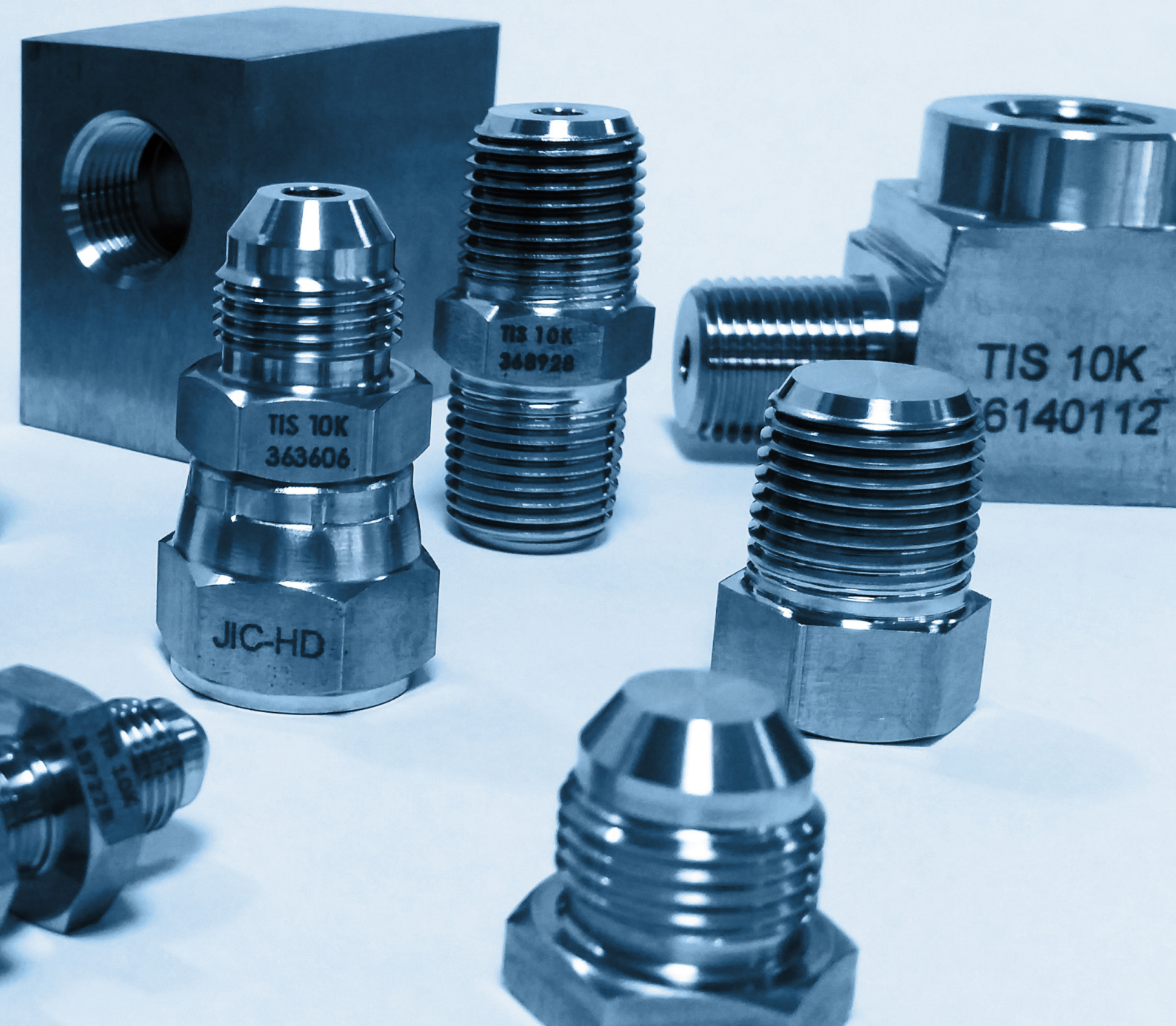


STAINLESS STEEL 10K FITTINGS



HYDRAULIC COMPONENTS & FLUID POWER EQUIPMENT

TIS Hydraulics is a specialist supplier of hydraulic components and fluid power equipment to the oil & gas, marine, renewable and defence industries.

Our business operates to the highest quality and safety standards, and is supported by unrivalled after sales service.



Established in 1994, our expert team draws from over 20 years of experience, a comprehensive product range and a vast stock inventory to offer a dependable and immediate resource for all of our customer's supply needs.

INDEX

TIS STAINLESS 10K FITTINGS

SPECIFICATION AND APPLICATION GUIDELINES	4
--	---

BSP CONNECTIONS

BSP'P' (CS) MALE X BSP'P' SWIVEL FEMALE	6
BSP'P' (CS) SWIVEL FEMALE X SWIVEL FEMALE	7
BSP'P' (CS) MALE BLANKING PLUG	8
BSP'P' (CS) MALE X JIC SWIVEL FEMALE ADAPTOR	9
BSP'P' (CS) MALE x NPT MALE ADAPTOR	10
BSP'P' (CS) MALE X NPT FIXED FEMALE ADAPTOR	12
BSP'P' (CS) MALE X MALE ADAPTOR	13

JIC CONNECTIONS

JIC MALE X BSP'P' (CS) MALE ADAPTOR	14
JIC MALE X JIC SWIVEL FEMALE ADAPTOR	15
JIC SWIVEL FEMALE X SWIVEL FEMALE ADAPTOR	16
JIC MALE X MALE ADAPTOR	17
JIC MALE X NPT MALE 90° BLOCK ELBOW	18
JIC MALE X NPT FIXED FEMALE ADAPTOR	19
JIC MALE X NPT MALE ADAPTOR	20

NPT CONNECTIONS

NPT FULL COUPLINGS	22
NPT FIXED FEMALE 90° BLOCK ELBOW	23
NPT FIXED FEMALE BLOCK TEE	24
NPT FIXED FEMALE BLOCK CROSS	25
NPT FIXED FEMALE BLANKING CAP	26
NPT MALE X BSP'P' (CS) SWIVEL FEMALE ADAPTOR	27
NPT MALE x JIC SWIVEL FEMALE ADAPTOR	28
NPT MALE x MALE ADAPTOR	29
NPT MALE x MALE 90° BLOCK ELBOW	30
NPT MALE EQUAL MALE TEE	31
NPT MALE x FEMALE ADAPTOR	32

TIS STAINLESS STEEL 10K FITTINGS

TIS 10K Pipe and Adaptor Fittings are designed and manufactured to provide a reliable connection in high pressure systems running to 10,000psi.

TIS fittings are manufactured from fully-traceable raw material to close tolerances and superior surface finishes. The fittings provide optimal performances when installed in accordance with TIS recommendations and the design parameters appropriate for each type of connection.



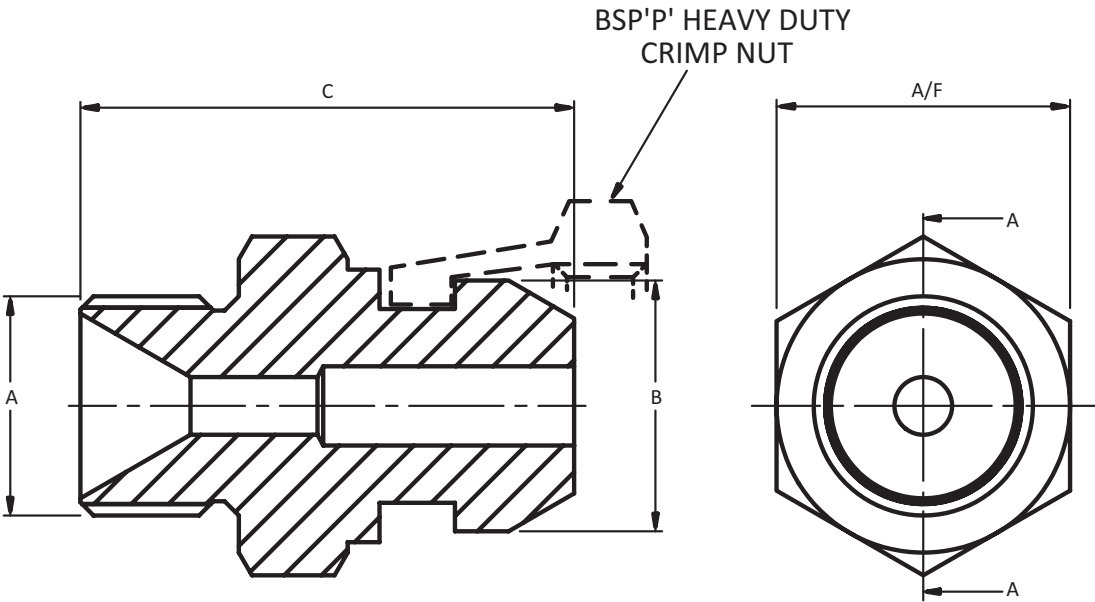
TIS STAINLESS STEEL 10K FITTINGS

SPECIFICATION AND APPLICATION GUIDELINES		
APPLICATION PARAMETER	TAPERED THREAD	PARALLEL THREAD
PRESSURES	High to 10,000psi (static systems only)	High to 10,000psi (static & dynamic systems)
TEMPERATURES	Stainless: -425° to 1200°F	Nitrile/Buna: -30° to 250°F Viton: -15° to 400°F
VIBRATION RESISTANCE	Poor	Very Good
MATERIALS	316/316L stainless steel to ASTM A-276 and A-479 bar stock	316/316L stainless steel to ASTM A-276 and A-479 bar stock
SIZE AVAILABLE (NOMINAL)	1/8" – 1"	1/8" – 1"
SEAL RELIABILITY	Good in static systems. Poor in dynamic systems. Medium tolerance to minor thread imperfections. Medium tolerance to assembly variation.	Excellent in static systems. Very Good in dynamic systems. Medium tolerance to thread & taper angle imperfections
THREAD & PORT PREPARATION	Anaerobic sealant, or pipe thread sealant	General lubricant applied to threads
EASE OF MAINTENANCE	Limited breaks and remakes due to metal deformation of threads	Very good. Virtually unlimited breaks & remakes.
SPECIFICATION CONFORMANCE (DESIGN, THREAD AND PRESSURE)	NPY: ANSI B1.20.1 and AS-7105 (frm. MIL-P-7105B) ISO/BSPT: ISO 7/1, JIS B0203, BS EN 10226-1	SAE: J1926, ISO 11926, ASME B1.1, ISO 263 ISO/BSPP: ISO228, JIS B0202
PRESSURE RATINGS	ASME B31.3	ASME B31.3

BSP FITTINGS | BSP'P' (CS) MALE X BSP'P' SWIVEL FEMALE

BSP'P' (CS) MALE X BSP'P' SWIVEL FEMALE					
PART NUMBER	DESCRIPTION	'A' THREAD	'B' THREAD	'C' LENGTH (mm)	'A/F' ACROSS FLATS (in)
10K-6G-8G-M-F	3/8" BSP'P' (CS) MALE x 1/2" BSP'P' (CS) SWIVEL FEMALE	3/8"	1/2"	37.40	0.875"
10K-8G-12G-M-F	1/2" BSP'P' (CS) MALE x 3/4" BSP'P' (CS) SWIVEL FEMALE	1/2"	3/4"	45.77	1.125"
10K-8G-16G-M-F	1/2" BSP'P' (CS) MALE x 1" BSP'P' (CS) SWIVEL FEMALE	1/2"	1"	52.85	1.375"
10K-16G-12G-M-F	1" BSP'P' (CS) MALE x 3/4" BSP'P' (CS) SWIVEL FEMALE	1"	3/4"	53.44	1.625"
10K-20G-16G-M-F	1. 1/4" BSP'P' (CS) MALE x 1" BSP'P' (CS) SWIVEL FEMALE	1. 1/4"	1"	62.10	2.000"

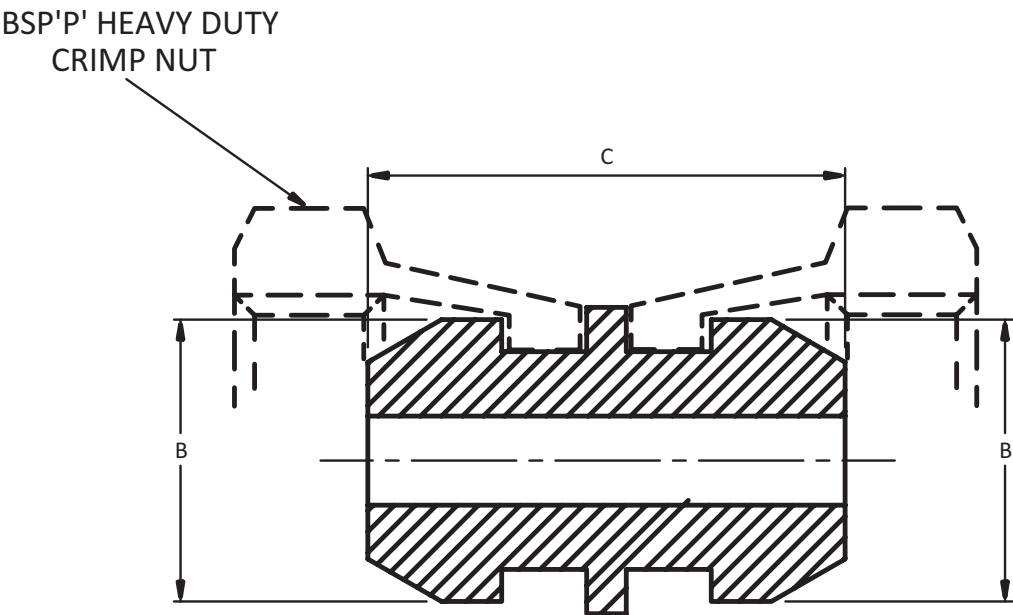
Other sizes and configurations available on request. Specials made to order.



BSP FITTINGS | BSP'P' (CS) SWIVEL FEMALE X SWIVEL FEMALE

BSP'P' (CS) SWIVEL FEMALE X SWIVEL FEMALE				
PART NUMBER	DESCRIPTION	'A' THREAD	'B' THREAD	'C' LENGTH (mm)
10K-8G-4G-F-F	1/2" BSP'P' (CS) SWIVEL FEMALE x 1/4" BSP (CS) SWIVEL FEMALE	1/2"	1/4"	31.60
10K-8G-6G-F-F	1/2" BSP'P' (CS) SWIVEL FEMALE x 3/8" BSP (CS) SWIVEL FEMALE	1/2"	3/8"	32.15
10K-8G-8G-F-F	1/2" BSP'P' (CS) SWIVEL FEMALE x SWIVEL FEMALE	1/2"	1/2"	32.15
10K-16G-12G-F-F	1" BSP'P' (CS) SWIVEL FEMALE x 3/4" BSP (CS) SWIVEL FEMALE	1"	3/4"	50.05
10K-16G-16G-F-F	1" BSP'P' (CS) SWIVEL FEMALE x SWIVEL FEMALE	1"	1"	50.05

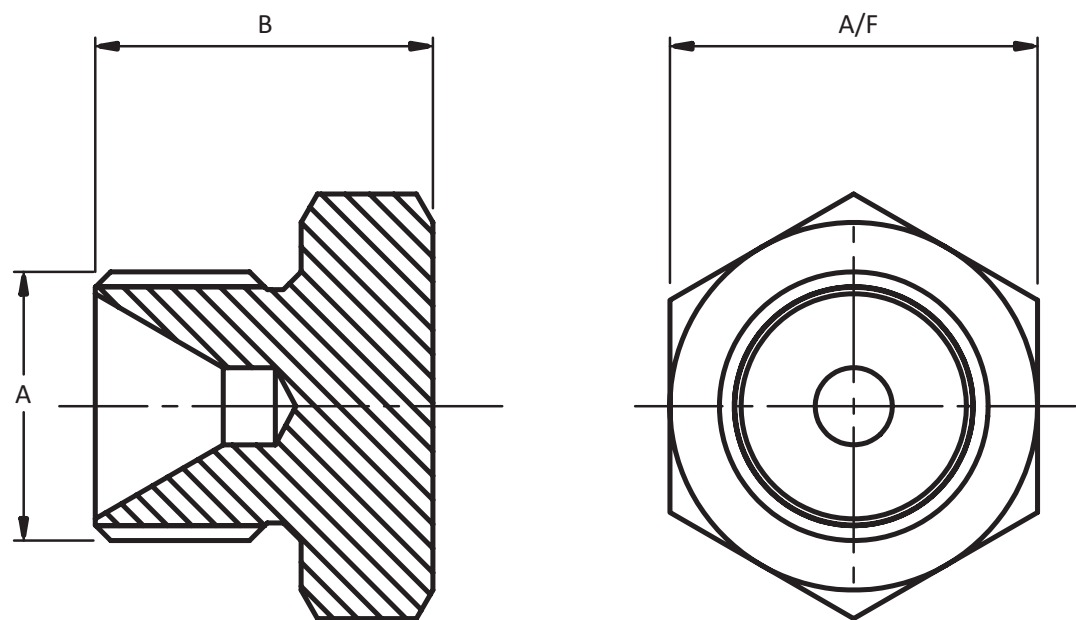
Other sizes and configurations available on request. Specials made to order.



BSP FITTINGS | BSP'P' (CS) MALE BLANKING PLUG

BSP'P' (CS) MALE BLANKING PLUG				
PART NUMBER	DESCRIPTION	'A' THREAD	'B' LENGTH (mm)	'A/F' ACROSS FLATS (in)
10K-4G-HP	1/4" BSP'P' (CS) MALE BLANKING PLUG	1/4"	19.10	0.875"
10K-6G-HP	3/8" BSP'P' (CS) MALE BLANKING PLUG	3/8"	22.20	1.125"
10K-8G-HP	1/2" BSP'P' (CS) MALE BLANKING PLUG	1/2"	28.60	1.250"
10K-12G-HP	3/4" BSP'P' (CS) MALE BLANKING PLUG	3/4"	31.70	1.450"
10K-16G-HP	1" BSP'P' (CS) MALE BLANKING PLUG	1"	41.30	1.650"

Other sizes and configurations available on request. Specials made to order.

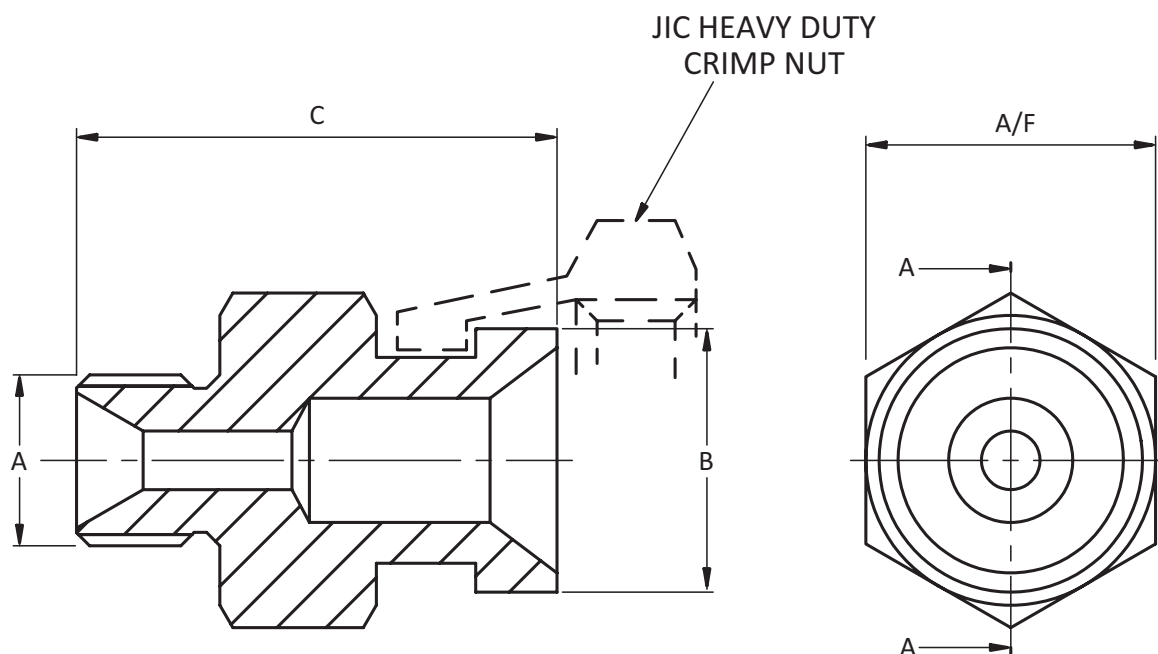


BSP FITTINGS | BSP'P' (CS) MALE X JIC SWIVEL FEMALE ADAPTOR

BSP'P' (CS) MALE X JIC SWIVEL FEMALE ADAPTOR

PART NUMBER	DESCRIPTION	'A' THREAD	'B' THREAD	'C' LENGTH (mm)	'A/F' ACROSS FLATS (in)
10K-4G-10J-M-F	1/4" BSP'P' MALE x 7/8"-14 TPI JIC SWIVEL FEMALE ADAPTOR	1/4"	7/8"-14	36.86	0.875"
10K-4G-12J-M-F	1/4" BSP'P' MALE x 1. 1/16"-12 TPI JIC SWIVEL FEMALE ADAPTOR	1/4"	1. 1/16"-12	37.74	1.010"
10K-6G-6J-M-F	3/8" BSP'P' MALE x 9/16"-18 TPI JIC SWIVEL FEMALE ADAPTOR	3/8"	9/16"-18	31.67	0.875"
10K-8G-8J-M-F	1/2" BSP'P' MALE x 3/4"-16 TPI JIC SWIVEL FEMALE ADAPTOR	1/2"	3/4"-16	38.71	1.125"
10K-12G-8J-M-F	3/4" BSP'P' MALE x 3/4"-16 TPI JIC SWIVEL FEMALE ADAPTOR	3/4"	3/4"-16	43.71	1.250"
10K-12G-16J-M-F	3/4" BSP'P' MALE x 1. 5/16"-12 TPI JIC SWIVEL FEMALE ADAPTOR	3/4"	1. 5/16"-12	49.67	1.250"

Other sizes and configurations available on request. Specials made to order.

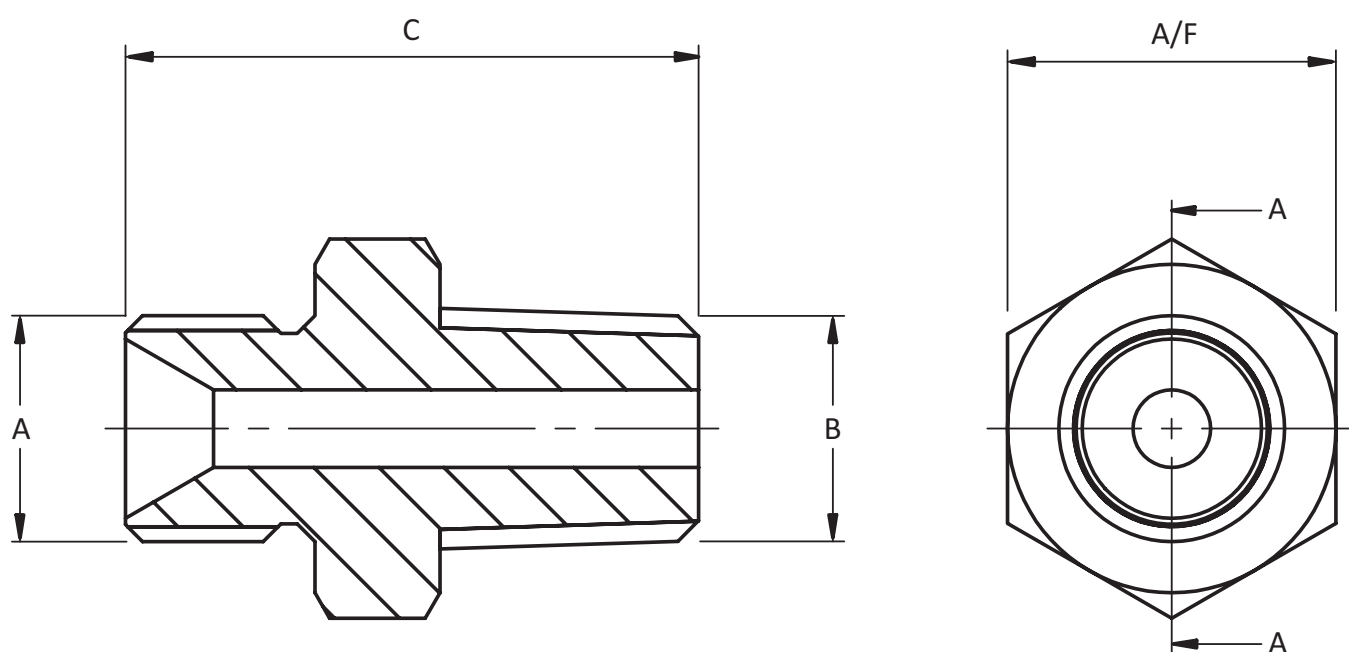


BSP FITTINGS | BSP'P' (CS) MALE X NPT MALE ADAPTOR

BSP'P' (CS) MALE X NPT MALE ADAPTOR

PART NUMBER	DESCRIPTION	'A' THREAD	'B' THREAD	'C' LENGTH (mm)	'A/F' ACROSS FLATS (in)
10K-4G-2N-M-M	1/4" BSP'P' (CS) MALE x 1/8" NPT MALE ADAPTOR	1/4"	1/8"	31.25	0.750"
10K-4G-4N-M-M	1/4" BSP'P' (CS) MALE x 1/4" NPT MALE ADAPTOR	1/4"	1/4"	33.25	0.750"
10K-4G-6N-M-M	1/4" BSP'P' (CS) MALE x 3/8" NPT MALE ADAPTOR	1/4"	3/8"	34.25	0.750"
10K-4G-8N-M-M	1/4" BSP'P' (CS) MALE x 1/2" NPT MALE ADAPTOR	1/4"	1/2"	38.94	0.875"
10K-4G-12N-M-M	1/4" BSP'P' (CS) MALE x 3/4" NPT MALE ADAPTOR	1/4"	3/4"	44.00	1.125"
10K-6G-4N-M-M	3/8" BSP'P' (CS) MALE x 1/4" NPT MALE ADAPTOR	3/8"	1/4"	37.00	0.875"
10K-6G-6N-M-M	3/8" BSP'P' (CS) MALE x 3/8" NPT MALE ADAPTOR	3/8"	3/8"	37.25	0.875"
10K-6G-8N-M-M	3/8" BSP'P' (CS) MALE x 1/2" NPT MALE ADAPTOR	3/8"	1/2"	41.25	0.875"
10K-8G-4N-M-M	1/2" BSP'P' (CS) MALE x 1/4" NPT MALE ADAPTOR	1/2"	1/4"	41.25	1.125"
10K-8G-6N-M-M	1/2" BSP'P' (CS) MALE x 3/8" NPT MALE ADAPTOR	1/2"	3/8"	42.25	1.125"
10K-8G-8N-M-M	1/2" BSP'P' (CS) MALE x 1/2" NPT MALE ADAPTOR	1/2"	1/2"	46.00	1.125"
10K-8G-12N-M-M	1/2" BSP'P' (CS) MALE x 3/4" NPT MALE ADAPTOR	1/2"	3/4"	47.00	1.125"
10K-8G-16N-M-M	1/2" BSP'P' (CS) MALE x 1" NPT MALE ADAPTOR	1/2"	1"	51.25	1.375"
10K-10G-8N-M-M	5/8" BSP'P' (CS) MALE x 1/2" NPT MALE ADAPTOR	5/8"	1/2"	50.25	1.125"
10K-12G-4N-M-M	3/4" BSP'P' (CS) MALE x 1/4" NPT MALE ADAPTOR	3/4"	1/4"	46.25	1.250"
10K-12G-6N-M-M	3/4" BSP'P' (CS) MALE x 3/8" NPT MALE ADAPTOR	3/4"	3/8"	47.25	1.250"
10K-12G-8N-M-M	3/4" BSP'P' (CS) MALE x 1/2" NPT MALE ADAPTOR	3/4"	1/2"	48.00	1.250"
10K-12G-12N-M-M	3/4" BSP'P' (CS) MALE x 3/4" NPT MALE ADAPTOR	3/4"	3/4"	52.00	1.250"
10K-12G-16N-M-M	3/4" BSP'P' (CS) MALE x 1" NPT MALE ADAPTOR	3/4"	1"	56.25	1.375"
10K-16G-12N-M-M	1" BSP'P' (CS) MALE x 3/4" NPT MALE ADAPTOR	1"	3/4"	55.00	1.625"
10K-16G-16N-M-M	1" BSP'P' (CS) MALE x 1" NPT MALE ADAPTOR	1"	1"	59.00	1.625"

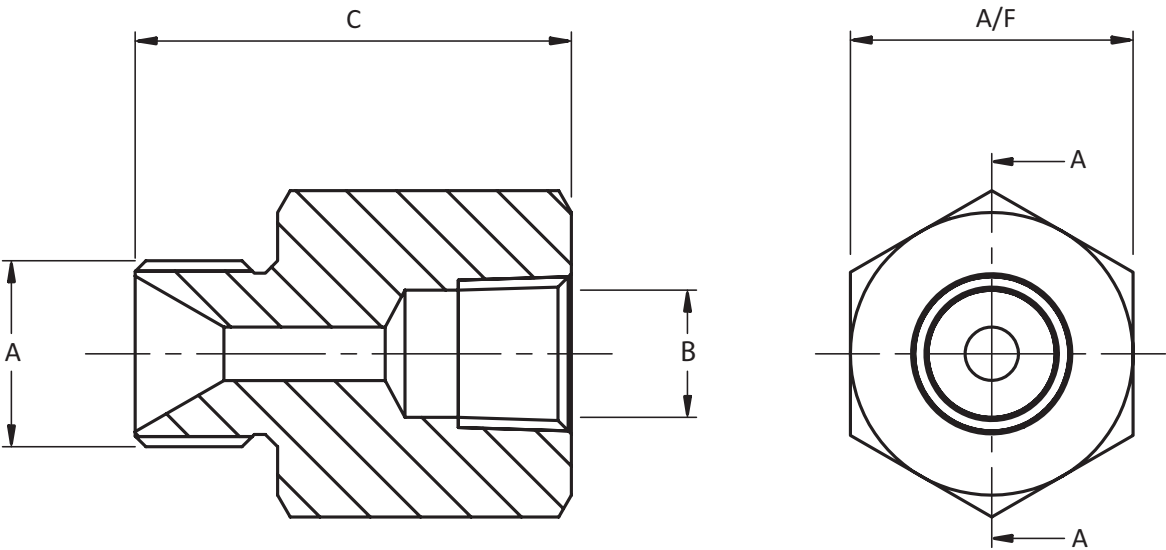
Other sizes and configurations available on request. Specials made to order.



BSP FITTINGS | BSP'P' (CS) MALE X NPT FIXED FEMALE ADAPTOR

BSP'P' (CS) MALE X NPT FIXED FEMALE ADAPTOR					
PART NUMBER	DESCRIPTION	'A' THREAD	'B' THREAD	'C' LENGTH (mm)	'A/F' ACROSS FLATS (in)
10K-4G-6N-M-F	1/4" BSP'P' (CS) MALE x 3/8" NPT FIXED FEMALE ADAPTOR	1/4"	3/8"	44.00	1.250"
10K-4G-8N-M-F	1/4" BSP'P' (CS) MALE x 1/2" NPT FIXED FEMALE ADAPTOR	1/4"	1/2"	45.93	1.375"
10K-6G-6N-M-F	3/8" BSP'P' (CS) MALE x 3/8" NPT FIXED FEMALE ADAPTOR	3/8"	3/8"	46.00	1.250"
10K-8G-4N-M-F	1/2" BSP'P' (CS) MALE x 1/4" NPT FIXED FEMALE ADAPTOR	1/2"	1/4"	46.00	1.125"
10K-8G-6N-M-F	1/2" BSP'P' (CS) MALE x 3/8" NPT FIXED FEMALE ADAPTOR	1/2"	3/8"	49.00	1.250"
10K-8G-8N-M-F	1/2" BSP'P' (CS) MALE x 1/2" NPT FIXED FEMALE ADAPTOR	1/2"	1/2"	51.32	1.375"

Other sizes and configurations available on request. Specials made to order.

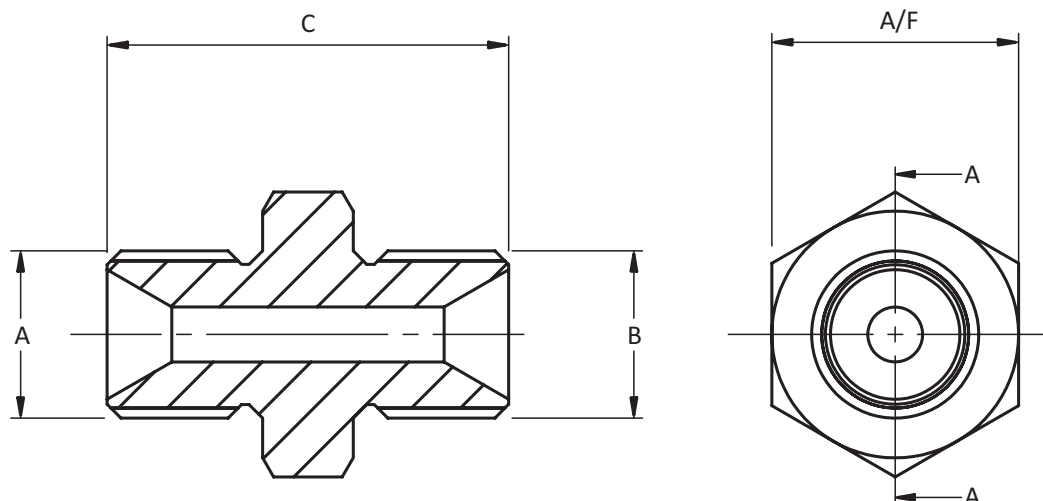


BSP FITTINGS | BSP'P' (CS) MALE X MALE ADAPTOR

BSP'P' (CS) MALE X MALE ADAPTOR

PART NUMBER	DESCRIPTION	'A' THREAD	'B' THREAD	'C' LENGTH (mm)	'A/F' ACROSS FLATS (in)
10K-2G-2G-M-M	1/8" BSP'P' (CS) MALE x 1/8" BSP'P' (CS) MALE ADAPTOR	1/8"	1/8"	23.25	0.5625"
10K-4G-4G-M-M	1/4" BSP'P' (CS) MALE x 1/4" BSP'P' (CS) MALE ADAPTOR	1/4"	1/4"	29.25	0.750"
10K-6G-2G-M-M	3/8" BSP'P' (CS) MALE x 1/8" BSP'P' (CS) MALE ADAPTOR	3/8"	1/8"	30.25	0.875"
10K-6G-4G-M-M	3/8" BSP'P' (CS) MALE x 1/4" BSP'P' (CS) MALE ADAPTOR	3/8"	1/4"	33.00	0.875"
10K-6G-6G-M-M	3/8" BSP'P' (CS) MALE x 3/8" BSP'P' (CS) MALE ADAPTOR	3/8"	3/8"	32.25	0.875"
10K-8G-4G-M-M	1/2" BSP'P' (CS) MALE x 1/4" BSP'P' (CS) MALE ADAPTOR	1/2"	1/4"	37.25	1.125"
10K-8G-6G-M-M	1/2" BSP'P' (CS) MALE x 3/8" BSP'P' (CS) MALE ADAPTOR	1/2"	3/8"	39.25	1.125"
10K-8G-8G-M-M	1/2" BSP'P' (CS) MALE x 1/2" BSP'P' (CS) MALE ADAPTOR	1/2"	1/2"	42.25	1.125"
10K-12G-2G-M-M	3/4" BSP'P' (CS) MALE x 1/8" BSP'P' (CS) MALE ADAPTOR	3/4"	1/8"	42.25	1.250"
10K-12G-4G-M-M	3/4" BSP'P' (CS) MALE x 1/4" BSP'P' (CS) MALE ADAPTOR	3/4"	1/4"	47.25	1.250"
10K-12G-8G-M-M	3/4" BSP'P' (CS) MALE x 1/2" BSP'P' (CS) MALE ADAPTOR	3/4"	1/2"	50.25	1.250"
10K-12G-12G-M-M	3/4" BSP'P' (CS) MALE x 3/4" BSP'P' (CS) MALE ADAPTOR	1"	3/4"	50.25	1.250"
10K-16G-12G-M-M	1" BSP'P' (CS) MALE x 3/4" BSP'P' (CS) MALE ADAPTOR	1"	3/4"	55.00	1.625"
10K-16G-16G-M-M	1" BSP'P' (CS) MALE x 1" BSP'P' (CS) MALE ADAPTOR	1"	1"	56.25	1.625"

Other sizes and configurations available on request. Specials made to order.

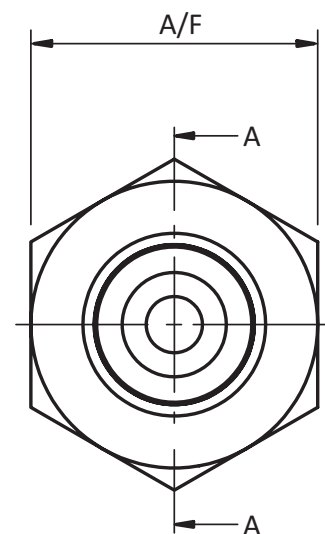
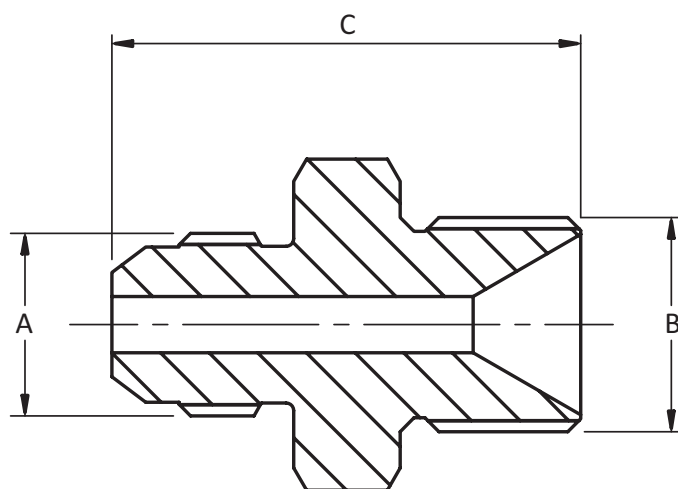


JIC FITTINGS | JIC MALE X BSP'P' (CS) MALE ADAPTOR

JIC MALE X BSP'P' (CS) MALE ADAPTOR

PART NUMBER	DESCRIPTION	'A' THREAD	'B' THREAD	'C' LENGTH (mm)	'A/F' ACROSS FLATS (in)
10K-4J-6G-M-M	7/16"-20 TPI JIC MALE x 3/8" BSP'P' (CS) MALE ADAPTOR	7/16"-20	3/8"	36.25	0.875"
10K-6J-4G-M-M	9/16"-18 TPI JIC MALE x 1/4" BSP'P' (CS) MALE ADAPTOR	9/16"-18	1/4"	32.25	0.750"
10K-6J-6G-M-M	9/16"-18 TPI JIC MALE x 3/8" BSP'P' (CS) MALE ADAPTOR	9/16"-18	3/8"	36.35	0.875"
10K-6J-8G-M-M	9/16"-18 TPI JIC MALE x 1/2" BSP'P' (CS) MALE ADAPTOR	9/16"-18	1/2"	40.35	1.125"
10K-8J-4G-M-M	3/4"-16 TPI JIC MALE x 1/4" BSP'P' (CS) MALE ADAPTOR	3/4"-16	1/4"	34.10	0.875"
10K-8J-6G-M-M	3/4"-16 TPI JIC MALE x 3/8" BSP'P' (CS) MALE ADAPTOR	3/4"-16	3/8"	38.95	0.875"
10K-8J-8G-M-M	3/4"-16 TPI JIC MALE x 1/2" BSP'P' (CS) MALE ADAPTOR	3/4"-16	1/2"	42.95	1.125"
10K-10J-4G-M-M	7/8"-14 TPI JIC MALE x 1/4" BSP'P' (CS) MALE ADAPTOR	7/8"-14	1/4"	38.20	1.010"
10K-12J-4G-M-M	1. 1/16"-12 TPI JIC MALE x 1/4" BSP'P' (CS) MALE ADAPTOR	1. 1/16"-12	1/4"	42.60	1.125"
10K-12J-12G-M-M	1. 1/16"-12 TPI JIC MALE x 3/4" BSP'P' (CS) MALE ADAPTOR	1. 1/16"-12	3/4"	53.15	1.250"
10K-16J-12G-M-M	1. 5/16"-12 TPI JIC MALE x 3/4" BSP'P' (CS) MALE ADAPTOR	1. 5/16"-12	3/4"	54.10	1.375"
10K-16J-16G-M-M	1. 5/16"-12 TPI JIC MALE x 1" BSP'P' (CS) MALE ADAPTOR	1. 5/16"-12	1"	57.35	1.625"

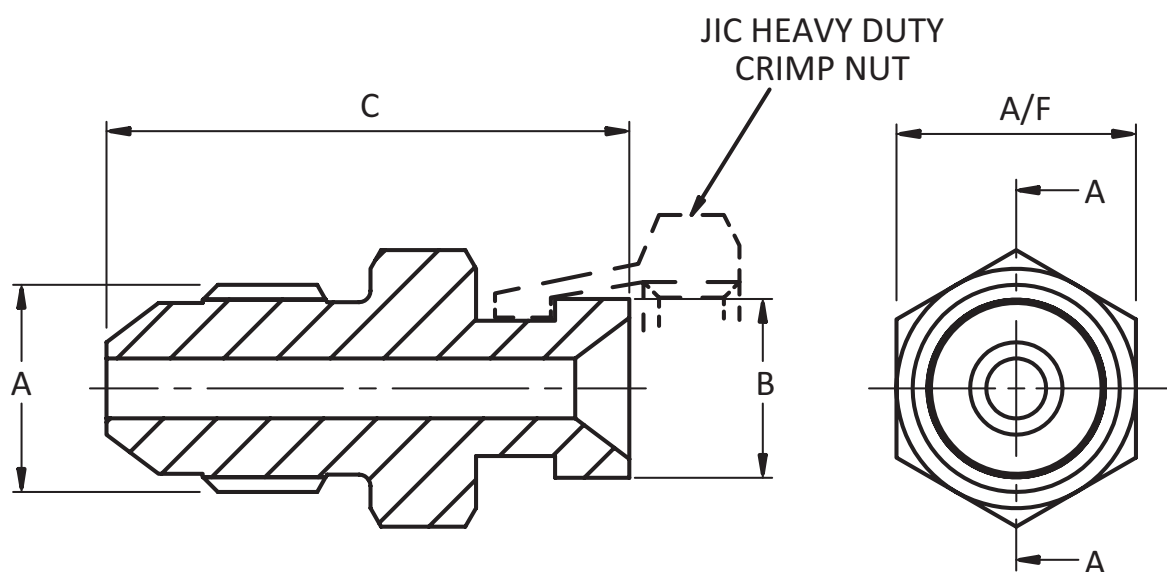
Other sizes and configurations available on request. Specials made to order.



JIC FITTINGS | JIC MALE X JIC SWIVEL FEMALE ADAPTOR

JIC MALE X JIC SWIVEL FEMALE ADAPTOR					
PART NUMBER	DESCRIPTION	'A' THREAD	'B' THREAD	'C' LENGTH (mm)	'A/F' ACROSS FLATS (in)
10K-4J-4J-M-F	7/16"-20 TPI JIC MALE x 7/16"-20 TPI JIC SWIVEL FEMALE ADAPTOR	7/16"-20	7/16"-20	27.73	0.500"
10K-4J-6J-M-F	7/16"-20 TPI JIC MALE x 9/16"-18 TPI JIC SWIVEL FEMALE ADAPTOR	7/16"-20	9/16"-18	30.82	0.625"
10K-6J-4J-M-F	9/16"-18 TPI JIC MALE x 7/16"-20 TPI JIC SWIVEL FEMALE ADAPTOR	9/16"-18	7/16"-20	28.63	0.625"
10K-6J-8J-M-F	9/16"-18 TPI JIC MALE x 3/4"-16 TPI JIC SWIVEL FEMALE ADAPTOR	9/16"-18	3/4"-16	38.56	0.750"
10K-6J-10J-M-F	9/16"-18 TPI JIC MALE x 7/8"-14 TPI JIC SWIVEL FEMALE ADAPTOR	9/16"-18	7/8"-14	39.96	0.875"
10K-6J-12J-M-F	9/16"-18 TPI JIC MALE x 1. 1/16"-12 TPI JIC SWIVEL FEMALE ADAPTOR	9/16"-18	1. 1/16"-12	40.84	1.010"
10K-8J-6J-M-F	3/4"-16 TPI JIC MALE x 9/16"-18 TPI JIC SWIVEL FEMALE ADAPTOR	3/4"-16	9/16"-18	35.12	0.875"
10K-8J-10J-M-F	3/4"-16 TPI JIC MALE x 7/8"-14 TPI JIC SWIVEL FEMALE ADAPTOR	3/4"-16	7/8"-14	42.56	0.875"
10K-10J-12J-M-F	7/8"-14 TPI JIC MALE x 1. 1/16"-12 TPI JIC SWIVEL FEMALE ADAPTOR	7/8"-14	1. 1/16"-12	46.04	1.010"
10K-16J-12J-M-F	1.5/16"-12 TPI JIC MALE x 1. 1/16"-12 TPI JIC SWIVEL FEMALE ADAPTOR	1. 5/16"-12	1. 1/16"-12	52.57	1.250"

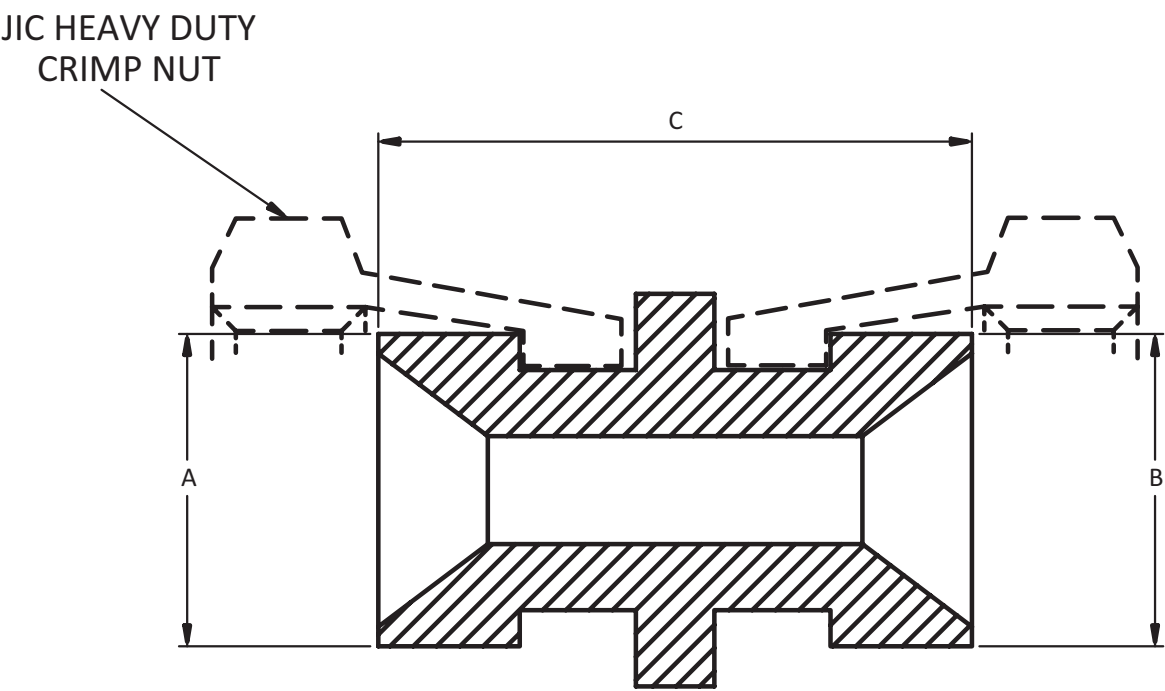
Other sizes and configurations available on request. Specials made to order.



JIC FITTINGS | JIC SWIVEL FEMALE X SWIVEL FEMALE ADAPTOR

JIC SWIVEL FEMALE X SWIVEL FEMALE ADAPTOR				
PART NUMBER	DESCRIPTION	'A' THREAD	'B' THREAD	'C' LENGTH (mm)
10K-6J-4J-F-F	9/16"-18 JIC SWIVEL FEMALE x 7/16"-20 JIC SWIVEL FEMALE ADAPTOR	9/16"-18	7/16"-20	21.73
10K-6J-6J-F-F	9/16"-18 JIC SWIVEL FEMALE ADAPTOR	9/16"-18	9/16"-18	24.02
10K-6J-8J-F-F	9/16"-18 JIC SWIVEL FEMALE x 3/4"-16 JIC SWIVEL FEMALE ADAPTOR	9/16"-18	3/4"-16	28.88

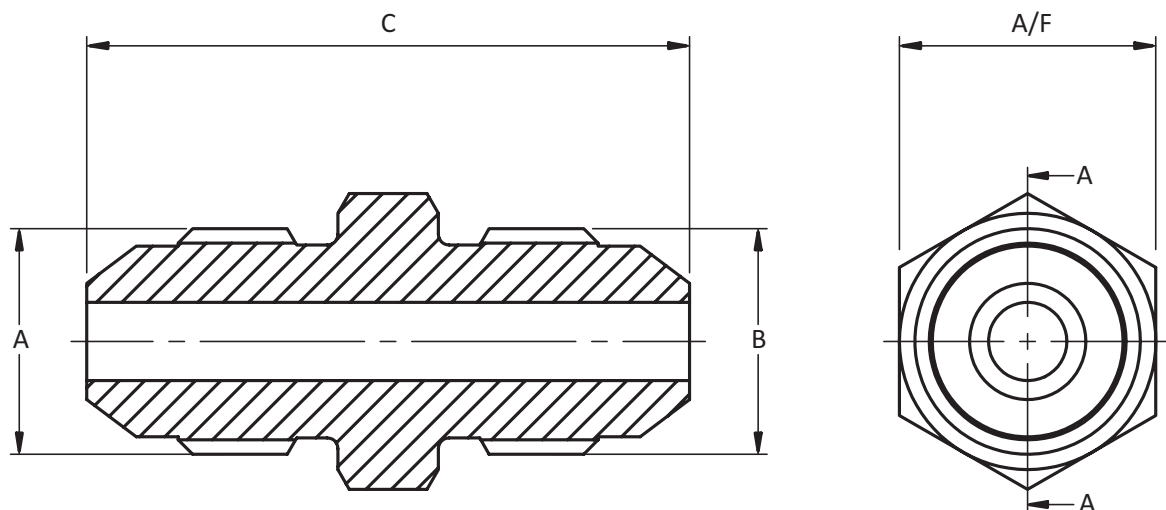
Other sizes and configurations available on request. Specials made to order.



JIC FITTINGS | JIC MALE X MALE ADAPTOR

JIC MALE X MALE ADAPTOR					
PART NUMBER	DESCRIPTION	'A' THREAD	'B' THREAD	'C' LENGTH (mm)	'A/F' ACROSS FLATS (in)
10K-4J-4J-M-M	7/16"-20 TPI JIC MALE x 7/16"-20 JIC MALE ADAPTOR	7/16"-20	7/16"-20	33.60	0.500"
10K-4J-6J-M-M	7/16"-20 TPI JIC MALE x 9/16"-18 JIC MALE ADAPTOR	7/16"-20	9/16"-18	34.50	0.625"
10K-5J-5J-M-M	1/2"-20 TPI JIC MALE x 1/2"-20 JIC MALE ADAPTOR	1/2"-20	1/2"-20	33.60	0.5625"
10K-6J-6J-M-M	9/16"-18 TPI JIC MALE x 9/16"-18 JIC MALE ADAPTOR	9/16"-18	9/16"-18	34.60	0.625"
10K-8J-8J-M-M	3/4"-16 TPI JIC MALE x 3/4"-16 JIC MALE ADAPTOR	3/4"-16	3/4"-16	39.80	0.875"
10K-10J-6J-M-M	7/8"-14 TPI JIC MALE x 9/16"-18 JIC MALE ADAPTOR	7/8"-14	9/16"-18	41.34	1.010"
10K-10J-8J-M-M	7/8"-14 TPI JIC MALE x 3/4"-16 JIC MALE ADAPTOR	7/8"-14	3/4"-16	43.94	1.010"
10K-12J-4J-M-M	1. 1/16"-12 TPI JIC MALE x 7/16"-20 JIC MALE ADAPTOR	1. 1/16"-12	7/16"-20	46.60	1.125"
10K-12J-6J-M-M	1. 1/16"-12 TPI JIC MALE x 9/16"-18 JIC MALE ADAPTOR	1. 1/16"-12	9/16"-18	45.70	1.125"
10K-12J-8J-M-M	1. 1/16"-12 TPI JIC MALE x 3/4"-16 JIC MALE ADAPTOR	1. 1/16"-12	3/4"-16	48.30	1.125"
10K-12J-10J-M-M	1. 1/16"-12 TPI JIC MALE x 7/8"-14 JIC MALE ADAPTOR	1. 1/16"-12	7/8"-14	50.90	1.125"
10K-12J-12J-M-M	1. 1/16"-12 TPI JIC MALE x 1. 1/16"-12 TPI JIC MALE ADAPTOR	1. 1/16"-12	1. 1/16"-12	53.50	1.125"
10K-16J-16 J-M-M	1. 5/16"-12 TPI JIC MALE x 1.5/16"-12 TPI JIC MALE ADAPTOR	1. 5/16"-12	1. 5/16"-12	55.90	1.375"

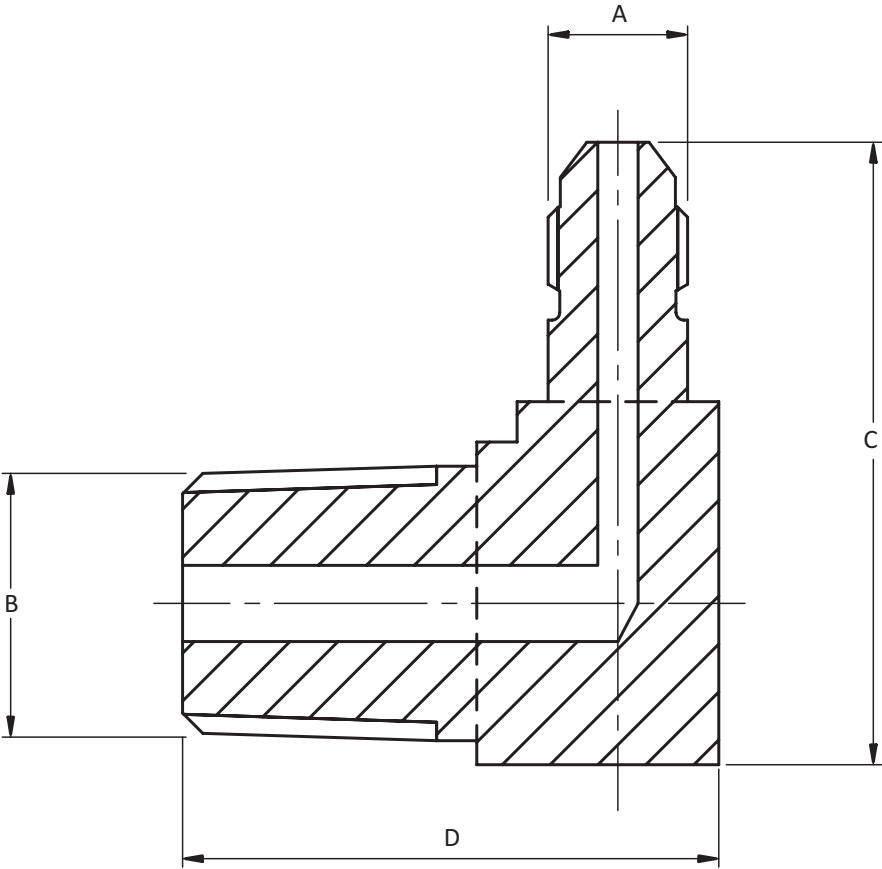
Other sizes and configurations available on request. Specials made to order.



JIC FITTINGS | JIC MALE X NPT MALE 90° BLOCK ELBOW

JIC MALE X NPT MALE 90° BLOCK ELBOW					
PART NUMBER	DESCRIPTION	'A' THREAD	'B' THREAD	'C' HEIGHT (mm)	'D' LENGTH (mm)
10K-4J-8N-M-M-90	7/16"-20 JIC MALE x 1/2" NPT MALE 90° BLOCK ELBOW	7/16"-20	1/2"	49.00	42.00
10K-6J-4N-M-M-90	9/16"-18 JIC MALE x 1/4" NPT MALE 90° BLOCK ELBOW	9/16"-18	1/4"	35.00	38.00
10K-6J-6N-M-M-90	9/16"-18 JIC MALE x 3/8" NPT MALE 90° BLOCK ELBOW	9/16"-18	3/8"	36.50	39.00
10K-6J-8N-M-M-90	9/16"-18 JIC MALE x 1/2" NPT MALE 90° BLOCK ELBOW	9/16"-18	1/2"	49.00	45.50
10K-8J-8N-M-M-90	3/4"-16 JIC MALE x 1/2" NPT MALE 90° BLOCK ELBOW	3/4"-16	1/2"	43.00	48.50

Other sizes and configurations available on request. Specials made to order.

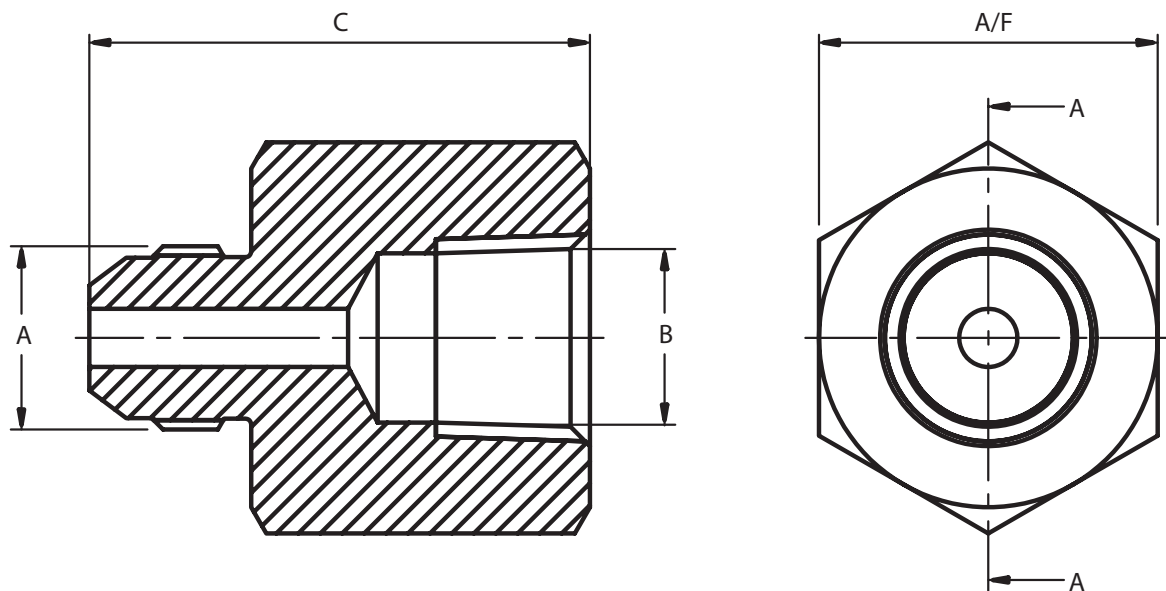


JIC FITTINGS | JIC MALE X NPT FIXED FEMALE ADAPTOR

JIC MALE X NPT FIXED FEMALE ADAPTOR

PART NUMBER	DESCRIPTION	'A' THREAD	'B' THREAD	'C' LENGTH (mm)	'A/F' ACROSS FLATS (in)
10K-4J-4N-M-F	7/16"-20 JIC MALE x 1/4" NPT FIXED FEMALE	7/16"-20	1/4"	44.00	1.010"
10K-4J-6N-M-F	7/16"-20 JIC MALE x 3/8" NPT FIXED FEMALE	7/16"-20	3/8"	47.00	1.250"
10K-4J-8N-M-F	7/16"-20 JIC MALE x 1/2" NPT FIXED FEMALE	7/16"-20	1/2"	48.93	1.375"
10K-6J-4N-M-F	9/16"-18 JIC MALE x 1/4" NPT FIXED FEMALE	9/16"-18	1/4"	44.10	1.010"
10K-6J-6N-M-F	9/16"-18 JIC MALE x 3/8" NPT FIXED FEMALE	9/16"-18	3/8"	47.10	1.250"
10K-8J-8N-M-F	3/4"-16 JIC MALE x 1/2" NPT FIXED FEMALE	3/4"-16	1/2"	51.63	1.375"

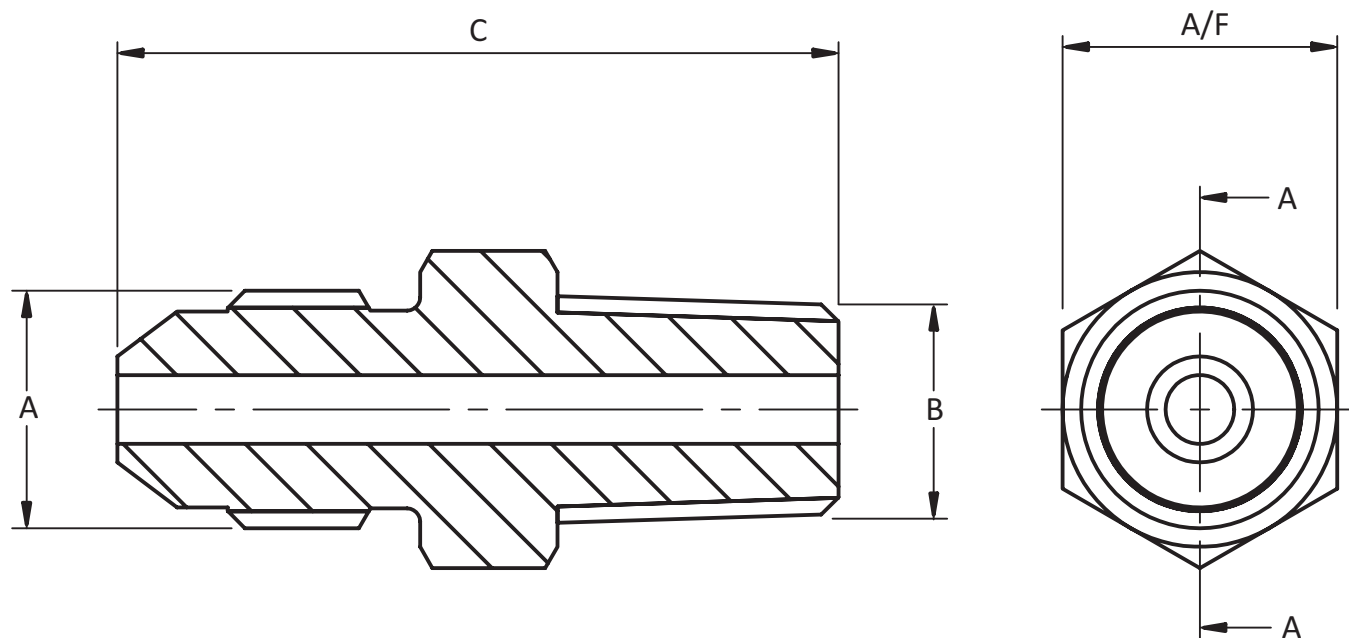
Other sizes and configurations available on request. Specials made to order.



JIC FITTINGS | JIC MALE X NPT MALE ADAPTOR

JIC MALE X NPT MALE ADAPTOR					
PART NUMBER	DESCRIPTION	'A' THREAD	'B' THREAD	'C' LENGTH (mm)	'A/F' ACROSS FLATS (in)
10K-4J-2N-M-M	7/16"-20 JIC MALE x 1/8" NPT MALE ADAPTOR	7/16"-20	1/8"	33.35	0.500"
10K-4J-4N-M-M	7/16"-20 JIC MALE x 1/4" NPT MALE ADAPTOR	7/16"-20	1/4"	37.26	0.5625"
10K-4J-6N-M-M	7/16"-20 JIC MALE x 3/8" NPT MALE ADAPTOR	7/16"-20	3/8"	37.94	0.710"
10K-4J-8N-M-M	7/16"-20 JIC MALE x 1/2" NPT MALE ADAPTOR	7/16"-20	1/2"	41.94	0.875"
10K-5J-2N-M-M	1/2"-20 JIC MALE x 1/8" NPT MALE ADAPTOR	1/2"-20	1/8"	33.35	0.5625"
10K-5J-4N-M-M	1/2"-20 JIC MALE x 1/4" NPT MALE ADAPTOR	1/2"-20	1/4"	35.35	0.625"
10K-5J-6N-M-M	1/2"-20 JIC MALE x 3/8" NPT MALE ADAPTOR	1/2"-20	3/8"	37.94	0.710"
10K-5J-8N-M-M	1/2"-20 JIC MALE x 1/2" NPT MALE ADAPTOR	1/2"-20	1/2"	41.94	0.875"
10K-6J-4N-M-M	9/16"-18 JIC MALE x 1/4" NPT MALE ADAPTOR	9/16"-18	1/4"	35.45	0.625"
10K-6J-6N-M-M	9/16"-18 JIC MALE x 3/8" NPT MALE ADAPTOR	9/16"-18	3/8"	38.04	0.710"
10K-6J-8N-M-M	9/16"-18 JIC MALE x 1/2" NPT MALE ADAPTOR	9/16"-18	1/2"	42.04	0.875"
10K-8J-4N-M-M	3/4"-16 JIC MALE x 1/4" NPT MALE ADAPTOR	3/4"-16	1/4"	38.10	0.875"
10K-8J-6N-M-M	3/4"-16 JIC MALE x 3/8" NPT MALE ADAPTOR	3/4"-16	3/8"	39.05	1.125"
10K-8J-8N-M-M	3/4"-16 JIC MALE x 1/2" NPT MALE ADAPTOR	3/4"-16	1/2"	44.64	0.875"
10K-10J-12N-M-M	7/8"-14 JIC MALE x 3/4" NPT MALE ADAPTOR	7/8"-14	3/4"	49.83	1.125"
10K-12J-6N-M-M	1.1/16"-12 JIC MALE x 3/8" NPT MALE ADAPTOR	1. 1/16"-12	3/8"	47.60	1.125"
10K-12J-8N-M-M	1.1/16"-12 JIC MALE x 1/2" NPT MALE ADAPTOR	1. 1/16"-12	1/2"	51.55	1.125"
10K-12J-12N-M-M	1.1/16"-12 JIC MALE x 3/4" NPT MALE ADAPTOR	1. 1/16"-12	3/4"	52.60	1.125"
10K-16J-8N-M-M	1.5/16"-12 JIC MALE x 1/2" NPT MALE ADAPTOR	1. 5/16"-12	1/2"	55.80	1.375"
10K-16J-12N-M-M	1.5/16"-12 JIC MALE x 3/4" NPT MALE ADAPTOR	1. 5/16"-12	3/4"	56.80	1.375"

Other sizes and configurations available on request. Specials made to order.

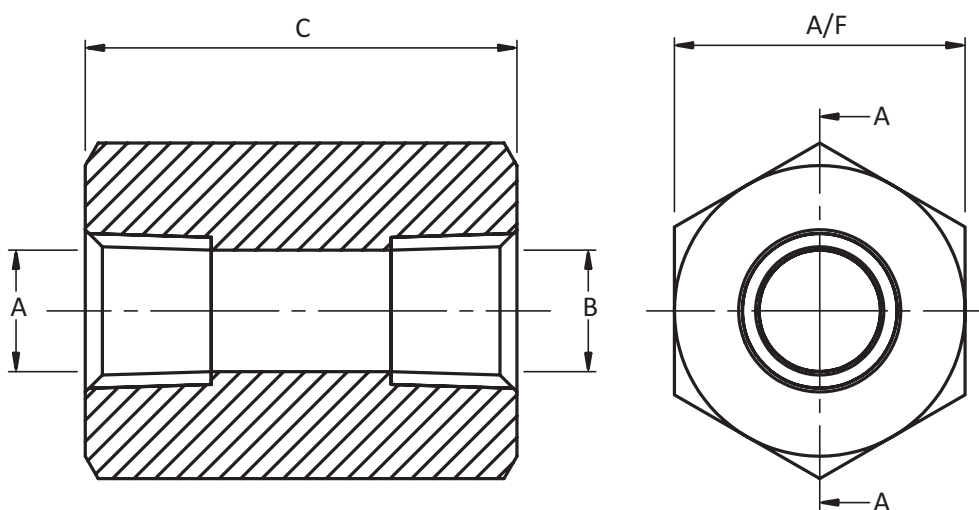


NPT FITTINGS | NPT FULL COUPLINGS

NPT FULL COUPLINGS

PART NUMBER	DESCRIPTION	'A' THREAD	'B' THREAD	'C' LENGTH (mm)	'A/F' ACROSS FLATS (in)
10K-4N-4N-F-F	1/4" NPT FULL COUPLING	1/4"	1/4"	38.00	1.010"
10K-6N-4N-F-F	1/4" x 3/8" NPT FULL COUPLING	1/4"	3/8"	38.00	1.250"
10K-8N-4N-F-F	1/4" x 1/2" NPT FULL COUPLING	1/4"	1/2"	47.63	1.375"
10K-6N-6N-F-F	3/8" NPT FULL COUPLING	3/8"	3/8"	38.00	1.250"
10K-8N-6N-F-F	3/8" x 1/2" NPT FULL COUPLING	3/8"	1/2"	47.63	1.375"
10K-8N-8N-F-F	1/2" NPT FULL COUPLING	1/2"	1/2"	47.50	1.375"
10K-12N-8N-F-F	1/2" x 3/4" NPT FULL COUPLING	1/2"	3/4"	50.80	1.750"
10K-12N-12N-F-F	3/4" NPT FULL COUPLING	3/4"	3/4"	50.80	1.750"
10K-16N-16N-F-F	1" NPT FULL COUPLING	1"	1"	60.20	2.500"

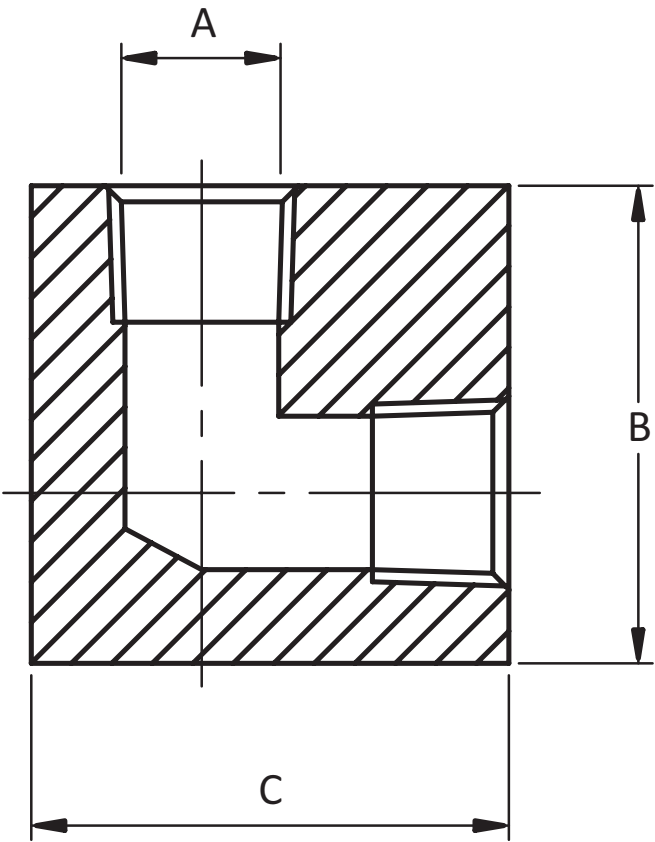
Other sizes and configurations available on request. Specials made to order.



NPT FITTINGS | NPT FIXED FEMALE 90° BLOCK ELBOW

NPT FIXED FEMALE 90° BLOCK ELBOW				
PART NUMBER	DESCRIPTION	'A' THREAD	'B' HEIGHT (mm)	'C' LENGTH (mm)
10K-4N-4N-F-F-90	1/4" NPT FIXED FEMALE 90° BLOCK ELBOW	1/4"	38.00	38.00
10K-6N-6N-F-F-90	3/8" NPT FIXED FEMALE 90° BLOCK ELBOW	3/8"	44.50	44.50
10K-8N-8N-F-F-90	1/2" NPT FIXED FEMALE 90° BLOCK ELBOW	1/2"	50.75	50.75
10K-12N-12N-F-F-90	3/4" NPT FIXED FEMALE 90° BLOCK ELBOW	3/4"	63.30	63.30
10K-16N-16N-F-F-90	1" NPT FIXED FEMALE 90° BLOCK ELBOW	1"	78.00	78.00

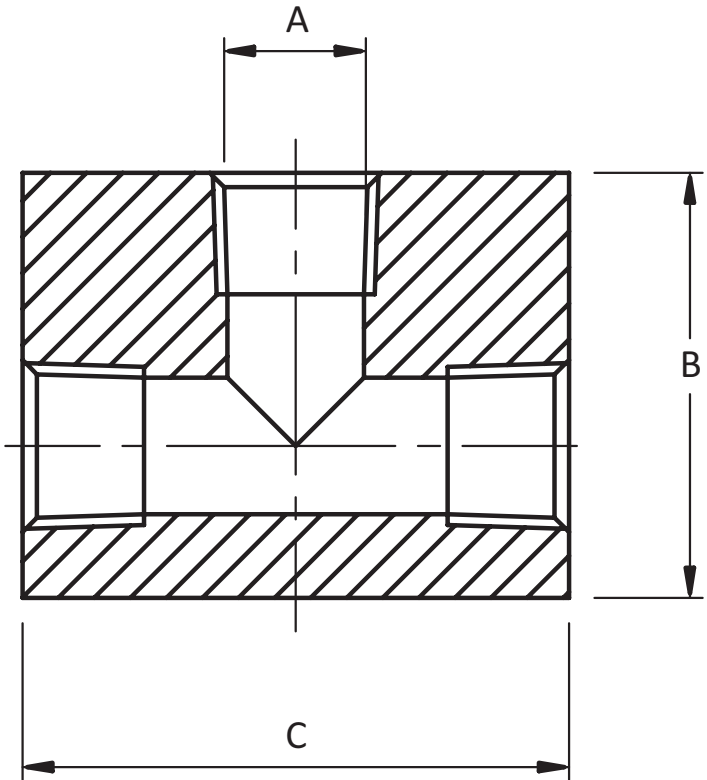
Other sizes and configurations available on request. Specials made to order.



NPT FITTINGS | NPT FIXED FEMALE BLOCK TEE

NPT FIXED FEMALE BLOCK TEE				
PART NUMBER	DESCRIPTION	'A' THREAD	'B' HEIGHT (mm)	'C' LENGTH (mm)
10K-4N-4N-4N-F	1/4" NPT FIXED FEMALE BLOCK TEE	1/4"	38.00	44.55
10K-6N-6N-6N-F	3/8" NPT FIXED FEMALE BLOCK TEE	3/8"	44.50	57.10
10K-8N-8N-8N-F	1/2" NPT FIXED FEMALE BLOCK TEE	1/2"	50.75	63.37
10K-12N-12N-12N-F	3/4" NPT FIXED FEMALE BLOCK TEE	3/4"	63.30	76.14
10K-16N-16N-16N-F	1" NPT FIXED FEMALE BLOCK TEE	1"	78.00	90.00

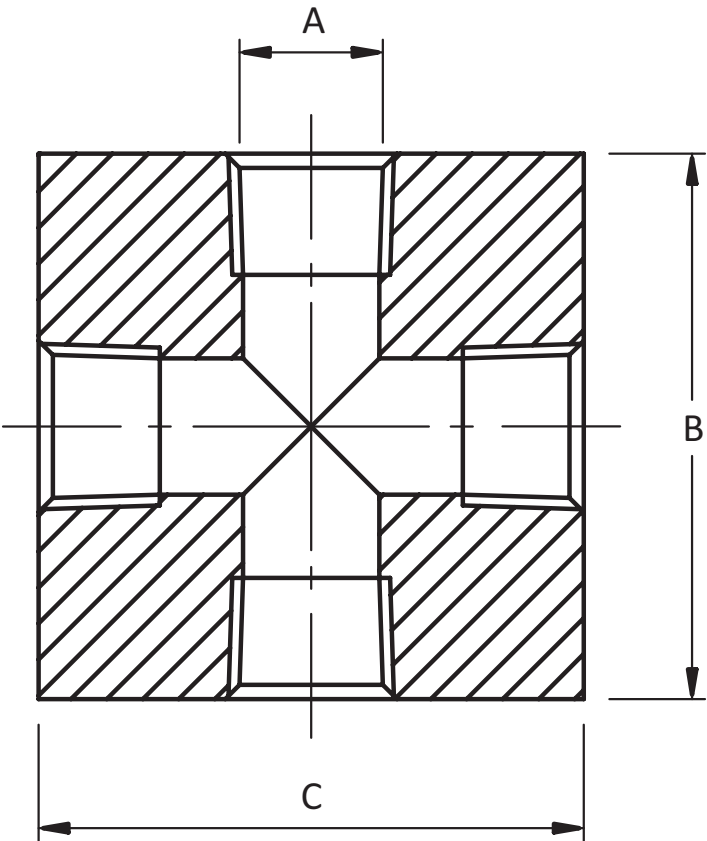
Other sizes and configurations available on request. Specials made to order.



NPT FITTINGS | NPT FIXED FEMALE BLOCK CROSS

NPT FIXED FEMALE BLOCK CROSS				
PART NUMBER	DESCRIPTION	'A' THREAD	'B' HEIGHT (mm)	'C' LENGTH (mm)
10K-4N-4N-4N-4N-F	1/4" NPT FIXED FEMALE EQUAL CROSS	1/4"	44.50	44.50
10K-6N-6N-6N-6N-F	3/8" NPT FIXED FEMALE EQUAL CROSS	3/8"	57.10	57.10
10K-8N-8N-8N-8N-F	1/2" NPT FIXED FEMALE EQUAL CROSS	1/2"	63.37	63.37
10K-12N-12N-12N-12N-F	3/4" NPT FIXED FEMALE EQUAL CROSS	3/4"	76.14	76.14
10K-16N-16N-16N-16N-F	1" NPT FIXED FEMALE EQUAL CROSS	1"	90.00	90.00

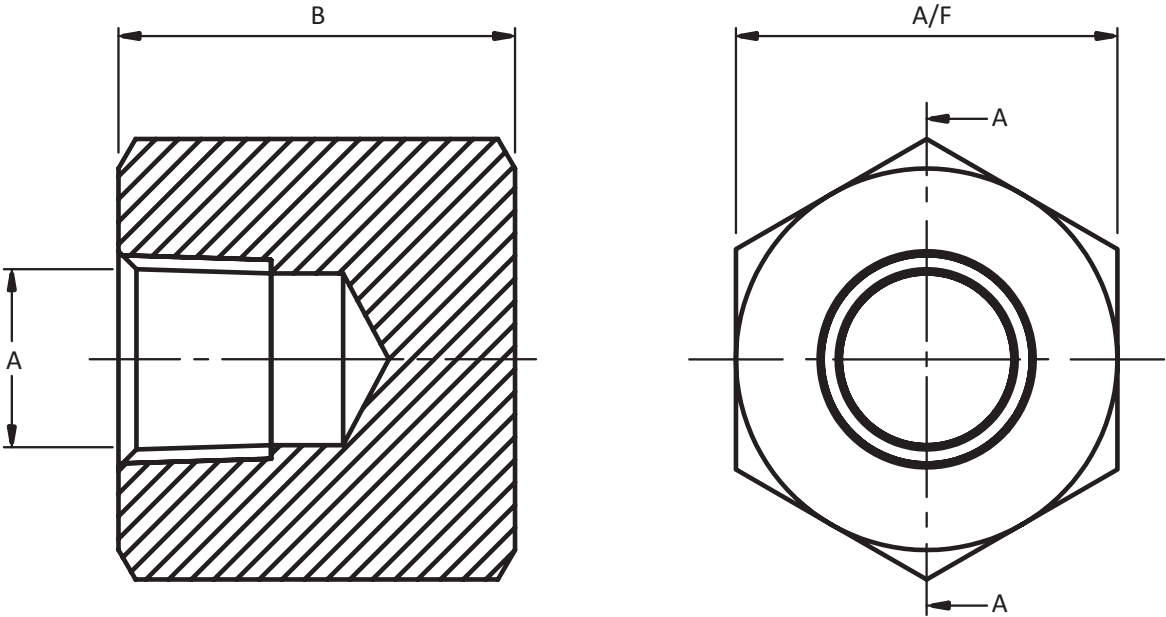
Other sizes and configurations available on request. Specials made to order.



NPT FITTINGS | NPT FIXED FEMALE BLANKING CAP

NPT FIXED FEMALE BLANKING CAP				
PART NUMBER	DESCRIPTION	'A' THREAD	'B' HEIGHT (mm)	'C' LENGTH (mm)
10K-6N-HC	3/8" NPT FIXED FEMALE BLANKING CAP	3/8"	33.00	1.250"
10K-8N-HC	1/2" NPT FIXED FEMALE BLANKING CAP	1/2"	34.92	1.375"

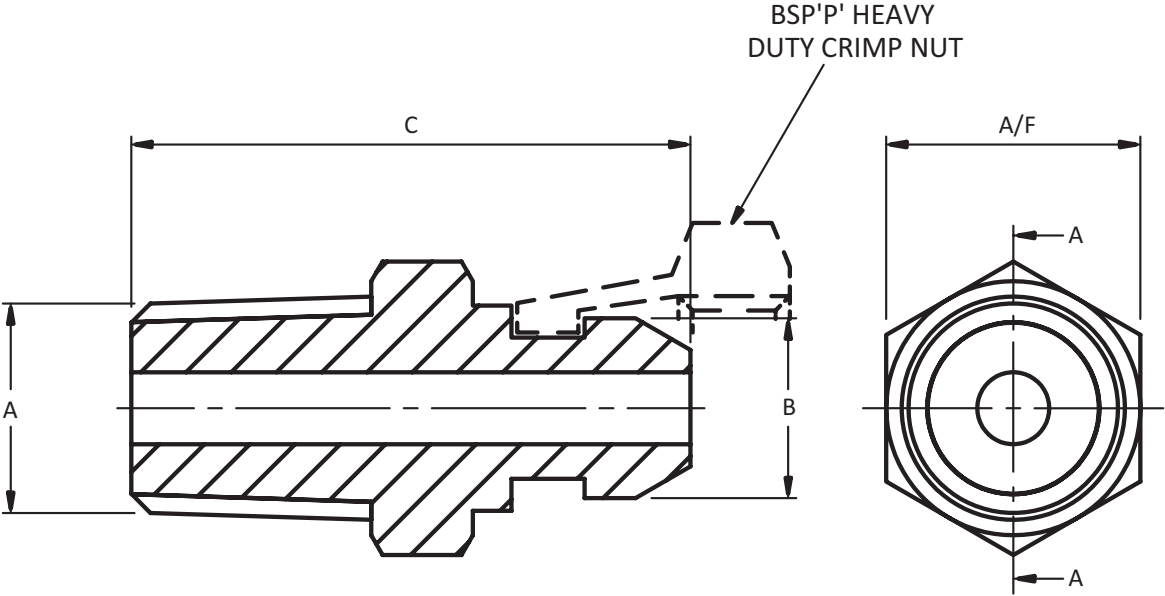
Other sizes and configurations available on request. Specials made to order.



NPT FITTINGS | NPT MALE X BSP'P' (CS) SWIVEL FEMALE ADAPTOR

NPT MALE X BSP'P' (CS) SWIVEL FEMALE ADAPTOR					
PART NUMBER	DESCRIPTION	'A' THREAD	'B' THREAD	'C' LENGTH (mm)	'A/F' ACROSS FLATS (in)
10K-4N-4G-M-F	1/4" NPT MALE x 1/4" BSP'P' (CS) SWIVEL FEMALE ADAPTOR	1/4"	1/4"	34.95	0.625"
10K-4N-8G-M-F	1/4" NPT MALE x 1/2" BSP'P' (CS) SWIVEL FEMALE ADAPTOR	1/4"	1/2"	40.86	0.875"
10K-8N-8G-M-F	1/2" NPT MALE x 1/2" BSP'P' (CS) SWIVEL FEMALE ADAPTOR	1/2"	1/2"	45.86	0.875"

Other sizes and configurations available on request. Specials made to order.

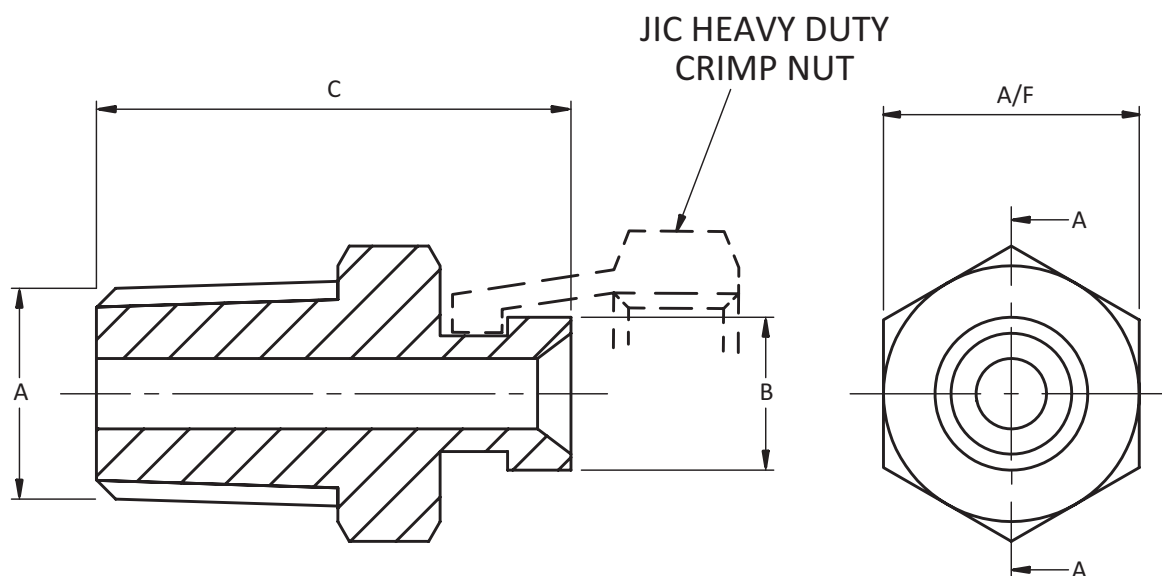


NPT FITTINGS | NPT MALE X JIC SWIVEL FEMALE ADAPTOR

NPT MALE x JIC SWIVEL FEMALE ADAPTOR

PART NUMBER	DESCRIPTION	'A' THREAD	'B' THREAD	'C' LENGTH (mm)	'A/F' ACROSS FLATS (in)
10K-4N-4J-M-F	1/4" NPT MALE x 7/16" -20 JIC SWIVEL FEMALE ADAPTOR	1/4"	7/16"-20	29.48	0.625"
10K-4N-5J-M-F	1/4" NPT MALE x 1/2" -20 JIC SWIVEL FEMALE ADAPTOR	1/4"	1/2"-20	31.26	0.625"
10K-4N-6J-M-F	1/4" NPT MALE x 9/16" -18 JIC SWIVEL FEMALE ADAPTOR	1/4"	9/16"-18	31.77	0.625"
10K-6N-6J-M-F	3/8" NPT MALE x 9/16" -18 JIC SWIVEL FEMALE ADAPTOR	3/8"	9/16"-18	32.77	0.710"
10K-8N-4J-M-F	1/2" NPT MALE x 7/16" -20 JIC SWIVEL FEMALE ADAPTOR	1/2"	7/16"-20	36.07	0.875"
10K-8N-6J-M-F	1/2" NPT MALE x 9/16" -18 JIC SWIVEL FEMALE ADAPTOR	1/2"	9/16"-18	38.32	0.875"
10K-8N-8J-M-F	1/2" NPT MALE x 3/4" -16 JIC SWIVEL FEMALE ADAPTOR	1/2"	3/4"-16	40.40	0.875"
10K-12N-10J-M-F	3/4" NPT MALE x 7/8" -14 JIC SWIVEL FEMALE ADAPTOR	3/4"	7/8"-14	46.86	1.125"
10K-12N-12J-M-F	3/4" NPT MALE x 1. 1/16" -12 JIC SWIVEL FEMALE ADAPTOR	3/4"	1. 1/16"-12	47.74	1.125"

Other sizes and configurations available on request. Specials made to order.

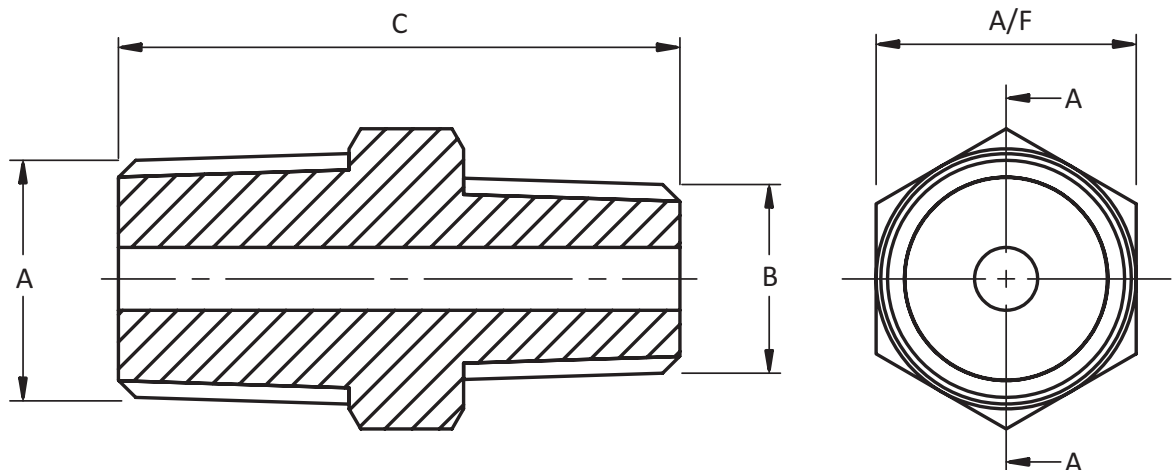


NPT FITTINGS | NPT MALE X MALE ADAPTOR

NPT MALE X MALE ADAPTOR

PART NUMBER	DESCRIPTION	'A' THREAD	'B' THREAD	'C' LENGTH (mm)	'A/F' ACROSS FLATS (in)
10K-4N-2N-M-M	1/4" NPT MALE x 1/8" NPT MALE ADAPTOR	1/4"	1/8"	34.35	0.625"
10K-4N-4N-M-M	1/4" NPT MALE x 1/4" NPT MALE ADAPTOR	1/4"	1/4"	36.50	0.5625"
10K-8N-4N-M-M	1/4" NPT MALE x 1/2" NPT MALE ADAPTOR	1/4"	1/2"	42.94	0.875"
10K-6N-4N-M-M	3/8" NPT MALE x 1/4" NPT MALE ADAPTOR	3/8"	1/4"	38.94	0.710"
10K-6N-6N-M-M	3/8" NPT MALE x 3/8" NPT MALE ADAPTOR	3/8"	3/8"	39.94	0.710"
10K-8N-6N-M-M	3/8" NPT MALE x 1/2" NPT MALE ADAPTOR	3/8"	1/2"	43.94	0.875"
10K-8N-8N-M-M	1/2" NPT MALE x 1/2" NPT MALE ADAPTOR	1/2"	1/2"	47.94	0.875"
10K-12N-4N-M-M	3/4" NPT MALE x 1/4" NPT MALE ADAPTOR	3/4"	1/4"	48.70	1.125"
10K-12N-8N-M-M	3/4" NPT MALE x 1/2" NPT MALE ADAPTOR	3/4"	1/2"	53.70	1.125"
10K-12N-12N-M-M	3/4" NPT MALE x 3/4" NPT MALE ADAPTOR	3/4"	3/4"	51.53	1.125"
10K-16N-8N-M-M	1" NPT MALE x 1/2" NPT MALE ADAPTOR	1"	1/2"	57.70	1.375"
10K-16N-12N-M-M	1" NPT MALE x 3/4" NPT MALE ADAPTOR	1"	3/4"	58.70	1.375"
10K-16N-16N-M-M	1" NPT MALE x 1" NPT MALE ADAPTOR	1"	1"	67.70	1.375"

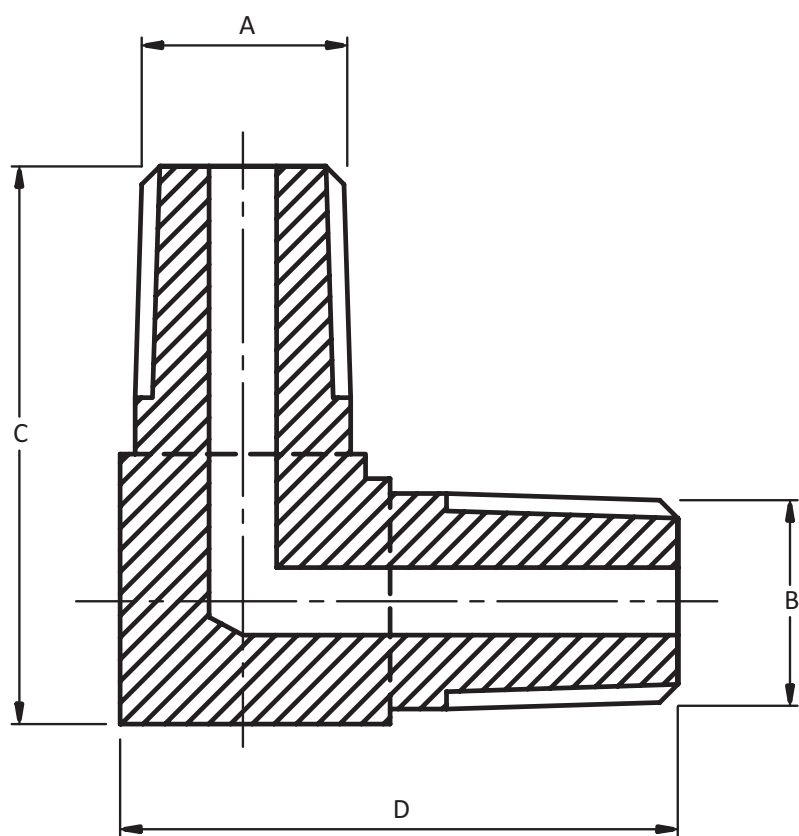
Other sizes and configurations available on request. Specials made to order.



NPT FITTINGS | NPT MALE X MALE 90° BLOCK ELBOW

NPT MALE X MALE 90° BLOCK ELBOW					
PART NUMBER	DESCRIPTION	'A' THREAD	'B' THREAD	'C' HEIGHT (mm)	'D' LENGTH (mm)
10K-4N-4N-M-M-90	1/4" NPT MALE x MALE 90° BLOCK ELBOW	1/4"	1/4"	36.00	36.00
10K-6N-6N-M-M-90	3/8" NPT MALE x MALE 90° BLOCK ELBOW	3/8"	3/8"	41.00	41.00
10K-8N-8N-M-M-90	1/2" NPT MALE x MALE 90° BLOCK ELBOW	1/2"	1/2"	55.00	55.00

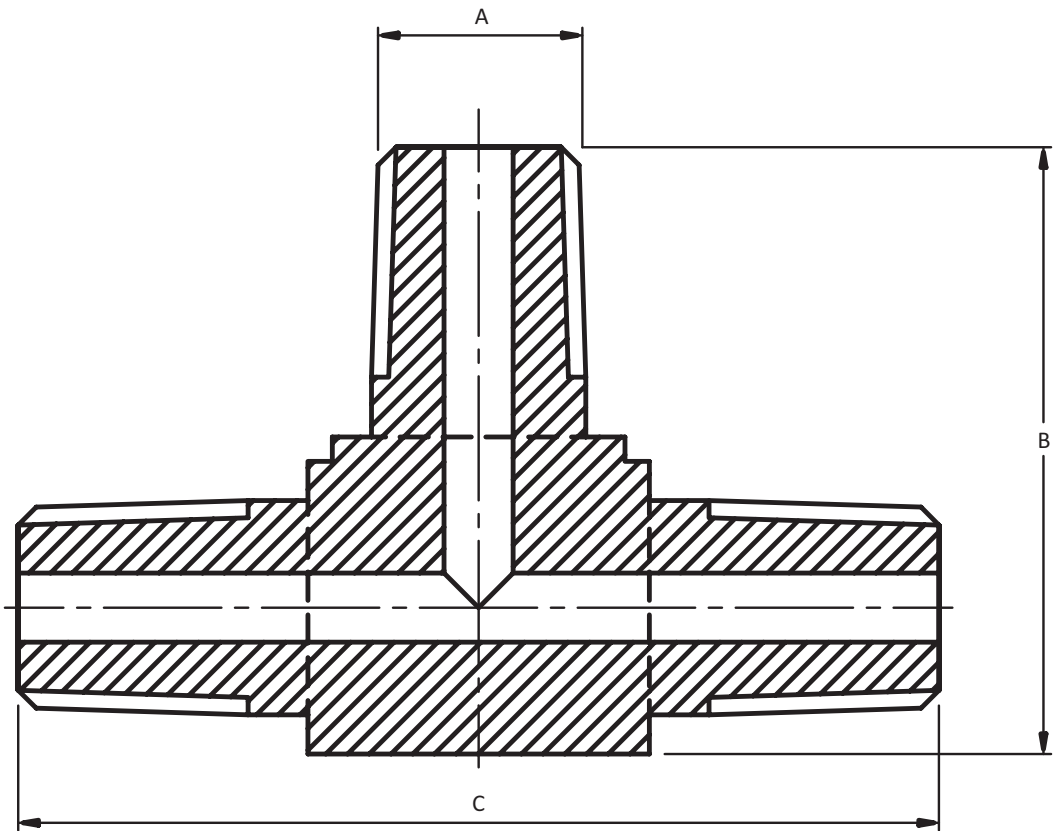
Other sizes and configurations available on request. Specials made to order.



NPT FITTINGS | NPT MALE EQUAL MALE TEE

NPT MALE EQUAL MALE TEE				
PART NUMBER	DESCRIPTION	'A' THREAD	'B' HEIGHT (mm)	'C' LENGTH (mm)
10K-4N-4N-4N-M	1/4" NPT MALE EQUAL BLOCK TEE	1/4"	39.00	60.00
10K-6N-6N-6N-M	3/8" NPT MALE EQUAL BLOCK TEE	3/8"	45.00	68.50
10K-8N-8N-8N-M	1/2" NPT MALE EQUAL BLOCK TEE	1/2"	55.00	84.00
10K-12N-12N-12N-M	3/4" NPT MALE EQUAL BLOCK TEE	3/4"	56.50	84.50
10K-16N-16N-16N-M	1" NPT MALE EQUAL BLOCK TEE	1"	66.50	101.50

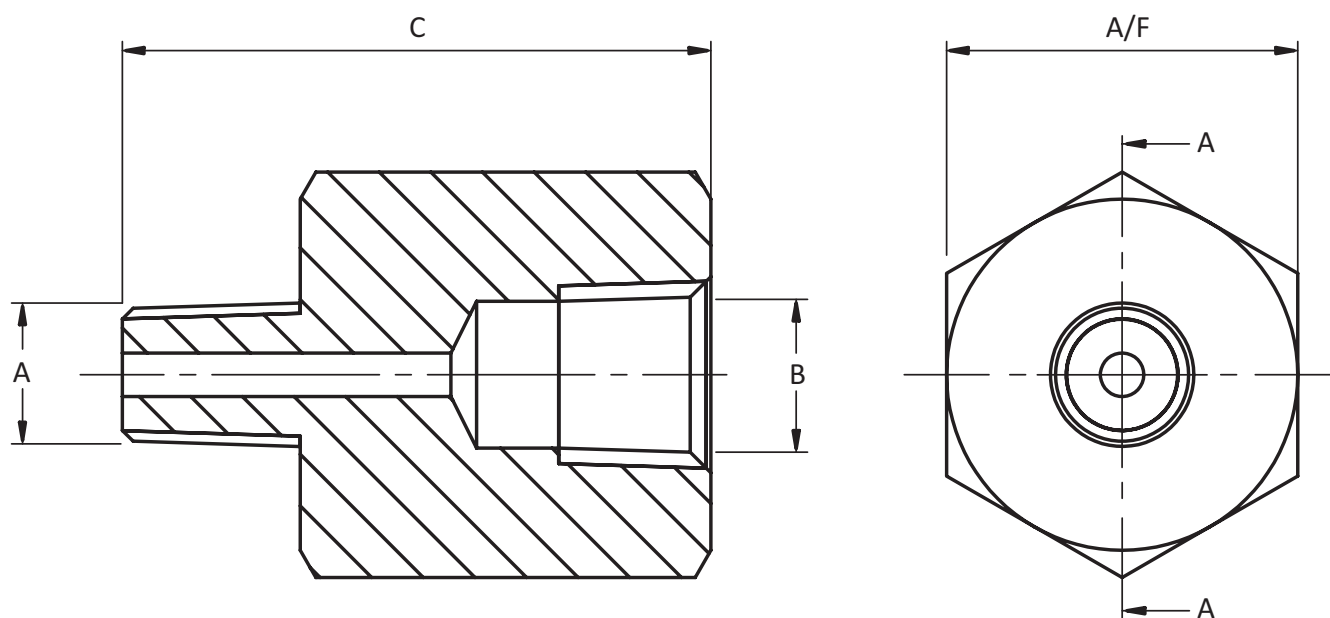
Other sizes and configurations available on request. Specials made to order.



NPT FITTINGS | NPT MALE X FEMALE ADAPTOR

NPT MALE X FEMALE ADAPTOR					
PART NUMBER	DESCRIPTION	'A' THREAD	'B' THREAD	'C' LENGTH (mm)	'A/F' ACROSS FLATS (in)
10K-2N-4N-M-F	1/8" NPT MALE x 1/4 NPT FEMALE ADAPTOR	1/8"	1/4"	43.00	1.010"
10K-2N-6N-M-F	1/8" NPT MALE x 3/8" NPT FEMALE ADAPTOR	1/8"	3/8"	46.00	1.250"
10K-2N-8N-M-F	1/8" NPT MALE x 1/2" NPT FEMALE ADAPTOR	1/8"	1/2"	47.92	1.375"
10K-4N-2N-M-F	1/4" NPT MALE x 1/8" NPT FEMALE ADAPTOR	1/4"	1/8"	40.70	0.920"
10K-4N-4N-M-F	1/4" NPT MALE x 1/4" NPT FEMALE ADAPTOR	1/4"	1/4"	45.00	1.010"
10K-4N-6N-M-F	1/4" NPT MALE x 3/8" NPT FEMALE ADAPTOR	1/4"	3/8"	48.00	1.250"
10K-4N-8N-M-F	1/4" NPT MALE x 1/2" NPT FEMALE ADAPTOR	1/4"	1/2"	50.80	1.375"
10K-6N-2N-M-F	3/8" NPT MALE x 1/8" NPT FEMALE ADAPTOR	3/8"	1/8"	44.00	0.920"
10K-6N-4N-M-F	3/8" NPT MALE x 1/4" NPT FEMALE ADAPTOR	3/8"	1/4"	45.88	1.010"
10K-6N-6N-M-F	3/8" NPT MALE x 3/8" NPT FEMALE ADAPTOR	3/8"	3/8"	49.00	1.250"
10K-6N-8N-M-F	3/8" NPT MALE x 1/2" NPT FEMALE ADAPTOR	3/8"	1/2"	58.80	1.250"
10K-8N-4N-M-F	1/2" NPT MALE x 1/4" NPT FEMALE ADAPTOR	1/2"	1/4"	50.00	1.010"
10K-8N-6N-M-F	1/2" NPT MALE x 3/8" NPT FEMALE ADAPTOR	1/2"	3/8"	53.00	1.250"
10K-8N-8N-M-F	1/2" NPT MALE x 1/2" NPT FEMALE ADAPTOR	1/2"	1/2"	54.92	1.375"
10K-8N-12N-M-F	1/2" NPT MALE x 3/4" NPT FEMALE ADAPTOR	1/2"	3/4"	66.92	1.750"
10K-12N-4N-M-F	3/4" NPT MALE x 1/4" NPT FEMALE ADAPTOR	3/4"	1/4"	51.00	1.125"
10K-12N-6N-M-F	3/4" NPT MALE x 3/8" NPT FEMALE ADAPTOR	3/4"	3/8"	51.00	1.250"
10K-12N-8N-M-F	3/4" NPT MALE x 1/2" NPT FEMALE ADAPTOR	3/4"	1/2"	55.92	1.375"
10K-16N-8N-M-F	1" NPT MALE x 1/2" NPT FEMALE ADAPTOR	1"	1/2"	56.92	1.375"
10K-16N-12N-M-F	1" NPT MALE x 3/4" NPT FEMALE ADAPTOR	1"	3/4"	59.92	1.750"

Other sizes and configurations available on request. Specials made to order.





INSTRUMENTATION FITTINGS

- ▶ Twin Ferrule Fittings
- ▶ JIC Fittings
- ▶ Flared Fittings
- ▶ Instrument Weld Fittings
- ▶ Micro Weld Fittings
- ▶ DIN 2353 Fittings
- ▶ JIS Bite Type Fittings

INSTRUMENTATION VALVES

- ▶ Needle Valves
- ▶ Ball & Plug Valves
- ▶ Check & Relief Valves
- ▶ Block & Bleed Valves
- ▶ Instrument Manifolds
- ▶ Bleed & Purge Valves
- ▶ Diaphragm Valves
- ▶ Bellows Valves
- ▶ Toggle Valves
- ▶ Inline Tee Filters



HIGH/MEDIUM PRESSURE VALVES & FITTINGS

TIS Hydraulics supplies a range of high/medium pressure valves & fittings, designed for use in a range of applications requiring 20,000, 43,000 and 66,000 psi pressure ratings.

- ▶ High Pressure Fittings
- ▶ Medium Pressure Fittings
- ▶ High Pressure Couplings / Adapters
- ▶ High Pressure Needle Valves
- ▶ High Pressure Ball Valves
- ▶ High Pressure Check Valves
- ▶ High Pressure Relief Valves
- ▶ High Pressure Subsea Valves



PNEUMATIC COMPONENTS

- ▶ Filter Regulators
- ▶ Manual Valves
- ▶ Solenoid Valves
- ▶ Airline Tubing
- ▶ Lubricators
- ▶ Fittings
- ▶ Auto Drains
- ▶ Silencers
- ▶ Check Valves



HIGH PRESSURE REGULATORS

- ▶ Piston Regulators
- ▶ Hydraulic Pressure Regulators
- ▶ Gas/Liquid Regulators
- ▶ High/Medium Flow Regulators
- ▶ Back Pressure Gas/Liquid Regulators
- ▶ Subsea Regulators
- ▶ Diving Regulators



PRESSURE GAUGES

- ▶ Vibragauge®
- ▶ Snubbagauge®
- ▶ Petrochemical Gauges
- ▶ Safety Pattern Gauges
- ▶ Test Gauges
- ▶ Chemical Seal Gauges
- ▶ Low Pressure Gauges
- ▶ Subsea Gauges
- ▶ Bespoke Gauges



HOSE ASSEMBLIES

TIS Hydraulics offers a wide range of rubber and thermoplastic hose assemblies ranging from 1/8" ID - 2" ID, working pressures up to 15,000 psi.

All assemblies delivered by TIS Hydraulics are subject to rigorous inspection, pressure testing and flushing services conducted at our specialist facilities.

These services are also provided to clients by our expert hydraulic technicians for third party hose and tubing assemblies.



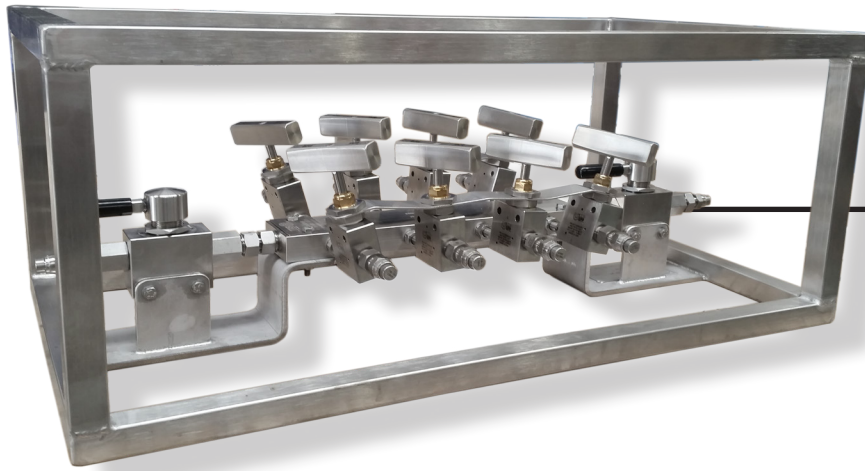
BESPOKE PRODUCTS

In addition to component supply, we also offer engineering and design of turnkey fluid control assemblies.

If you have a unique project, we can design a bespoke solution to suit.

ANCILLARY EQUIPMENT

- ▶ Cam & Groove
- ▶ Air Fittings
- ▶ Whip Checks
- ▶ McDonald Couplings
- ▶ DIN Product
- ▶ Clamps
- ▶ PTFE Hoses
- ▶ Metallic Hoses
- ▶ Quick Release Couplings
- ▶ Relief Valves



BESPOKE FLUID
CONTROL MANIFOLD

Our 9,600m² facility houses a comprehensive inventory of hydraulic components and fluid power equipment, with continuous stock level analysis performed to ensure client requirements are met with minimum delivery times.

With the global headquarters and warehouse located within minutes of Aberdeen airport, we are ideally positioned to offer global response to urgent client requirements.

A swift local delivery service is also provided to Aberdeenshire companies from our Kirkhill Industrial Estate base.





t: +44 (0) 1224 775277 | f: +44 (0) 1224 775040 | e: sales@tis-hydraulics.com

Kirkhill Place | Kirkhill Industrial Estate | Dyce | Aberdeen AB21 0GU | UK

tis-hydraulics.com